

ADDENDUM NO. ONE

TO

**BID DOCUMENTS, CONTRACT DOCUMENTS,
CONSTRUCTION SPECIFICATIONS AND DRAWINGS**

FOR

WATER SYSTEM IMPROVEMENTS

IRON AND MANGANESE FILTERS

FOR THE

CITY OF MCRAE-HELENA, GEORGIA

PROJECT NO. 192310

NEW BID DATE: Bids Received Until Tuesday, April 9, 2024 @ 2:00 p.m.

ACKNOWLEDGE RECEIPT OF THIS ADDENDUM BY INSERTING ITS NUMBER IN THE PROPOSAL. FAILURE TO DO SO MAY SUBJECT BONA FIDE BIDDERS TO DISQUALIFICATION. THIS ADDENDUM FORMS A PART OF THE PROJECT DOCUMENTS; IT MODIFIES THEM AS FOLLOWS:

March 13, 2024



BID DOCUMENTS

Refer to Advertisement for Bids, Page AB-1.

Revise the first sentence to read:

“Sealed proposals for the City of McRae-Helena, Georgia will be received by the City of McRae-Helena, Georgia, 25 South First Avenue, McRae-Helena, Georgia 31055, until 2:00 p.m. local time, Tuesday, **April 9, 2024.**”

CONSTRUCTION SPECIFICATIONS

Refer to Section 7.12 Packaged Filter System:

Revise Table 7.12 A on Page 7-5 to read:

<i>Table 7.12 A</i>		
Well	Flow Rate	Model
1-Forsyth	460 gpm	APU 26-6660CS-3-AVH
2-Homer	660 gpm	MOD 26- 90 60CS-2-AVT-DI
3-Industrial	690 gpm	MOD 26- 90 60CS-2-AVT-DI
4-Hammock	1,200 gpm	MOD 26- 120 60CS-2-AVT-DI

Revise Section 7.12.D. on Page 7-6 to read:

2. System shall be a complete packaged treatment system **that is skid-mounted for Well #1 and floor mounted for Wells #2, #3 and #4** with pre-assembled valve tee between vessels.
4. All piping and fittings shall be **SCH 80 PVC for Well #1 and cement lined class 350 ductile iron for Wells #2, #3, and #4.**
10. Backwash water shall be treated water **from pressurized distribution** and shall enter the system ~~back~~ through the treated outlet tie point.

Revise Section 7.12.G.1.h.2 on Page 7-8 to read:

- 2) Outlet Collector:
 - Type: Hub and slotted laterals w/ 0.010" slots
 - Material: **Well #1 – SCH 80 PVC**
Wells #2, #3, and #4 – 304 Stainless Steel

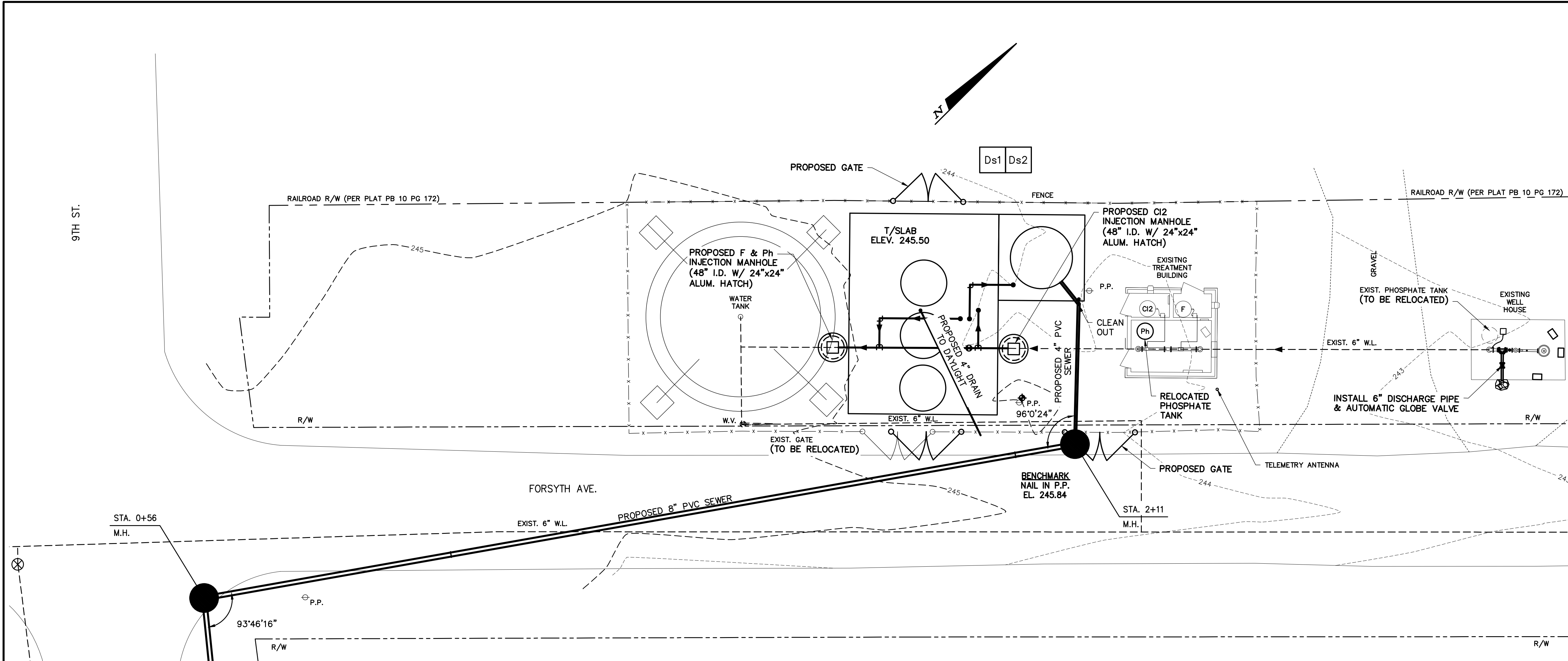
CONSTRUCTION DRAWINGS

Refer to Sheets 2, 3 and 4 of 30.

Replace with the enclosed Sheets 2, 3 and 4 of 30.

END OF ADDENDUM NO. ONE

P:\McRae - Helena\192310_FY22_CDBG_WSI_Well_Filters\Drawings\Wells_Site.dwg



LEGEND

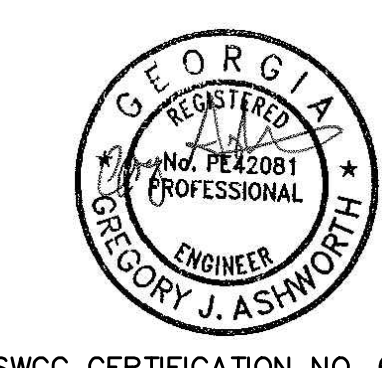
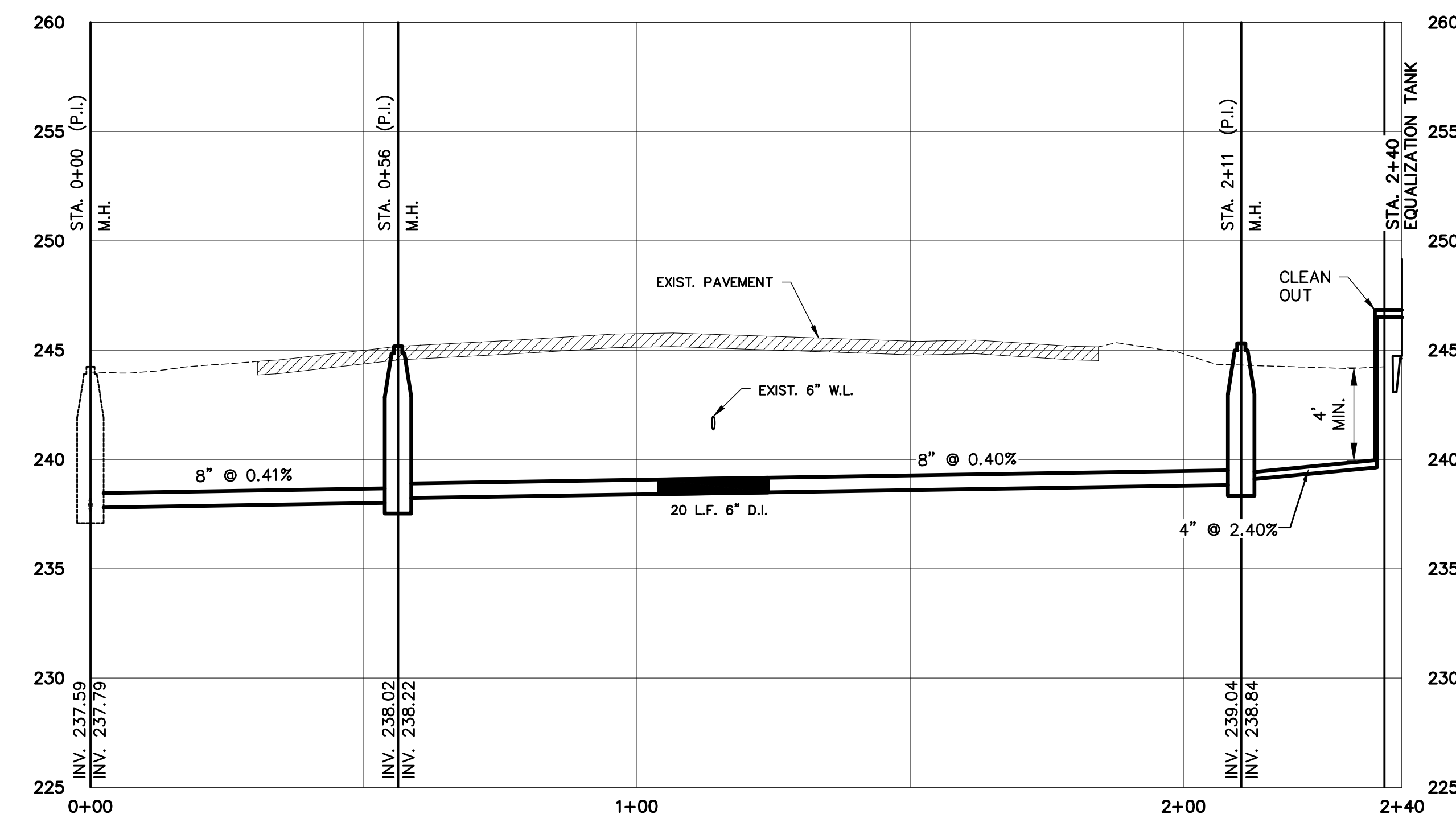
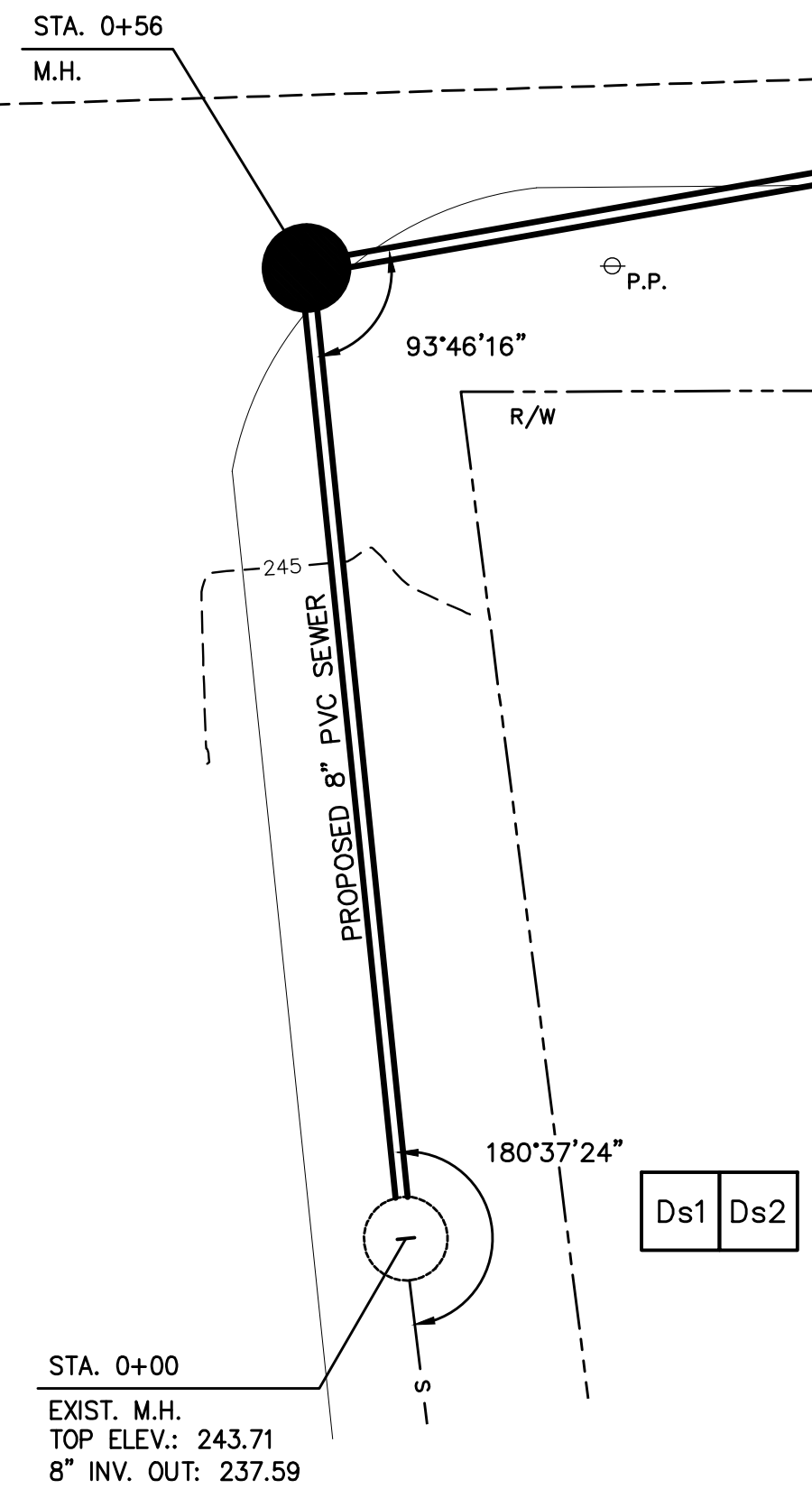
	EXISTING	PROPOSED
STRUCTURE		
ROADWAY		
GRAVEL DRIVE		
SIDEWALK		
FENCE		
PROPERTY LINE		
CONTOUR		
WATER LINE		

WELL #1 SITE PLAN
SCALE: 1"=10'



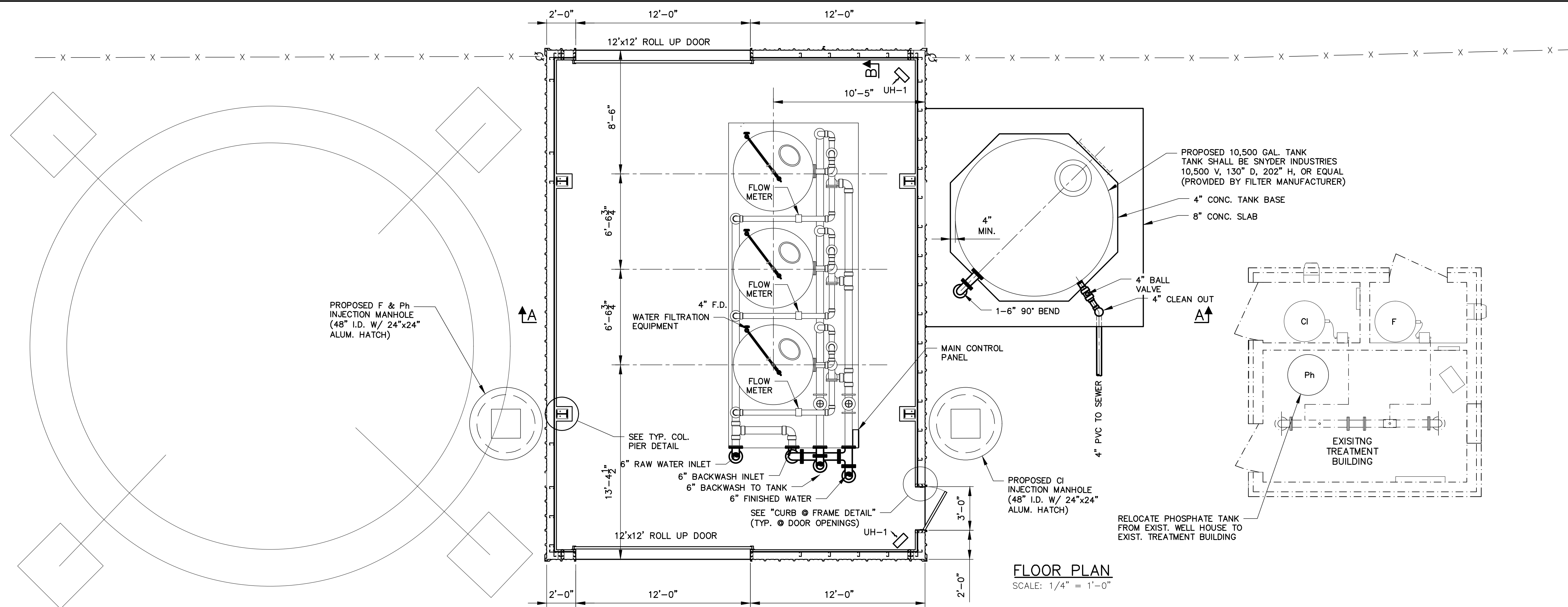
GENERAL NOTES

1. THE ESCAPE OF SEDIMENT FROM THE SITE SHALL BE PREVENTED BY THE INSTALLATION OF EROSION AND SEDIMENT CONTROL MEASURES AND PRACTICES PRIOR TO, OR CONCURRENT WITH, LAND-DISTURBING ACTIVITIES.
2. EROSION CONTROL MEASURES WILL BE MAINTAINED AT ALL TIMES, IF FULL IMPLEMENTATION OF THE APPROVED PLAN DOES NOT PROVIDE FOR EFFECTIVE EROSION CONTROL, ADDITIONAL, EROSION AND SEDIMENT CONTROL MEASURES SHALL BE IMPLEMENTED TO CONTROL OR TREAT THE SEDIMENT SOURCE.
3. ANY DISTURBED AREA LEFT EXPOSED FOR A PERIOD GREATER THAN 7 DAYS SHALL BE STABILIZED WITH MULCH OR PAM.
4. CONTRACTOR SHALL VERIFY LOCATION OF EXISTING WATER LINE BEFORE POURING SLAB.
5. AN EPA APPROVED CONCRETE WASHOUT CONTAINER SHALL BE PROVIDED.



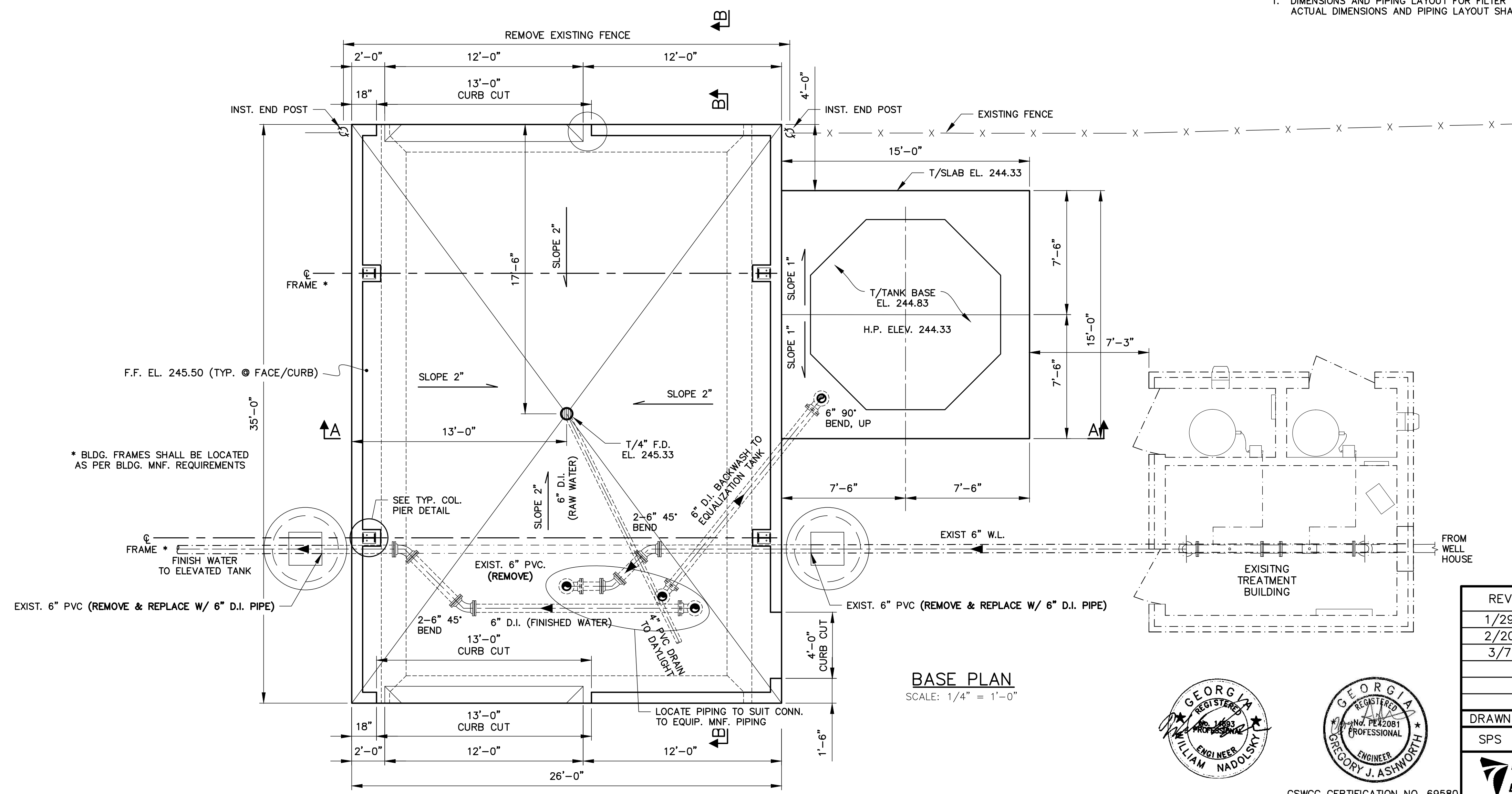
REVISIONS		CITY OF McRAE-HELENA, GEORGIA	
1/29/2024		WATER SYSTEM IMPROVEMENTS	
FY2022 CDBG WELL FILTERS			
WELL #1 SITE PLAN			
DRAWN	CHECKED	SCALE: AS SHOWN	DATE: AUGUST 2023
SPS	GJA	SHEET	
TURNIPSEED ENGINEERS		ATLANTA AUGUSTA ST. SIMONS ISLAND	2 OF 30

GSWCC CERTIFICATION NO. 69580



FLOOR PLAN
SCALE: 1/4" = 1'-0"

NOTE:
1. DIMENSIONS AND PIPING LAYOUT FOR FILTER VESSELS ARE APPROXIMATE. ACTUAL DIMENSIONS AND PIPING LAYOUT SHALL BE PER MANUFACTURER.

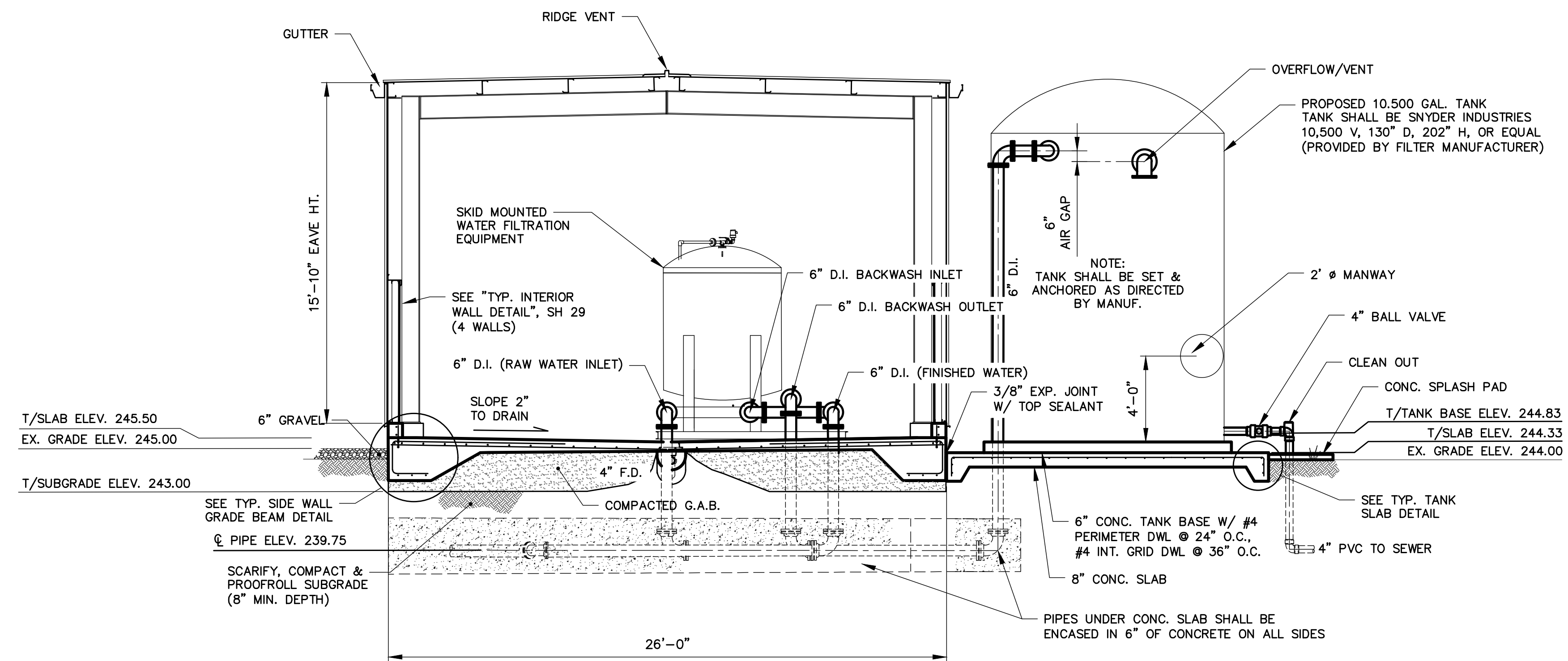


BASE PLAN
SCALE: 1/4" = 1'-0"

REVISIONS		CITY OF McRAE-HELENA, GEORGIA WATER SYSTEM IMPROVEMENTS	
1/29/2024		FY2022 CDBG WELL FILTERS	
2/20/2024		WELL #1 PROPOSED PLANS	
3/7/2024			
DRAWN	CHECKED	SCALE: AS SHOWN DATE: AUGUST 2023	
SPS	GJA		
TURNIPSEED ENGINEERS		ATLANTA AUGUSTA ST. SIMONS ISLAND	
GSWCC CERTIFICATION NO. 69580		SHEET 3 OF 30	

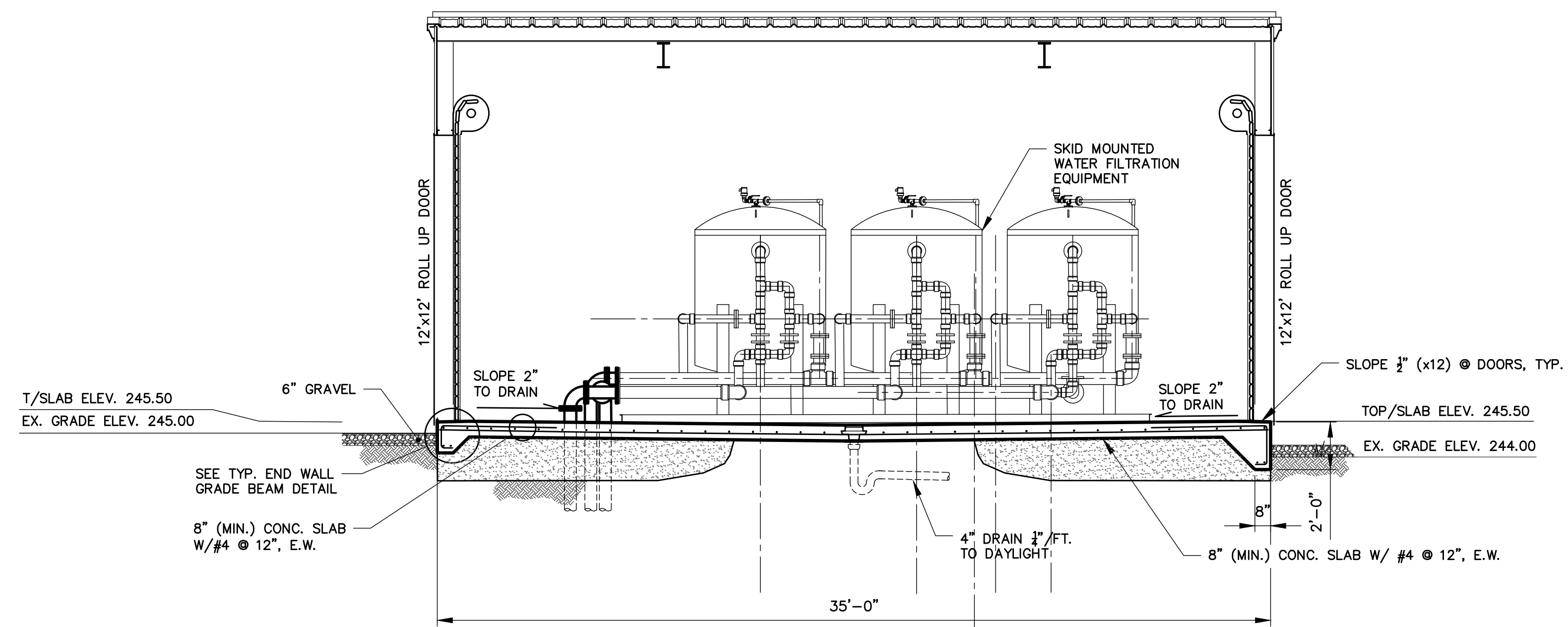


P:\McRae - Helena\192310_FY22_CDBG_WSI_Well_Filters\Drawings\Wells_Proposed.dwg



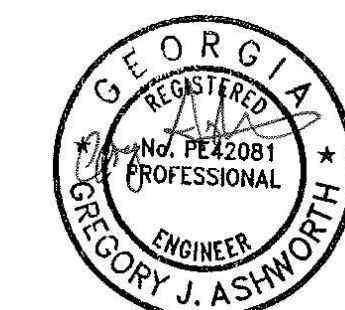
SECTION A-A
SCALE: 1/4" = 1'-0"

- NOTE:
1. VALVE TREE COMES PRE-ASSEMBLED BY MANUFACTURER.
 2. FOR CONC. SLAB DETAILS SEE SHEET 29
 3. DIMENSIONS AND PIPING LAYOUT FOR FILTER VESSELS ARE APPROXIMATE. ACTUAL DIMENSIONS AND PIPING LAYOUT SHALL BE PER MANUFACTURER.



SECTION B-B
SCALE: 1/4" = 1'-0"

REVISIONS		CITY OF McRAE-HELENA, GEORGIA WATER SYSTEM IMPROVEMENTS	
1/29/2024		FY2022 CDBG WELL FILTERS	
2/20/2024		WELL #1 PROPOSED SECTIONS	
3/7/2024			
DRAWN	CHECKED	SCALE: AS SHOWN DATE: AUGUST 2023	
SPS	GJA		
TURNIPSEED ENGINEERS		ATLANTA AUGUSTA ST. SIMONS ISLAND	
		SHEET 4 OF 30	



GSWCC CERTIFICATION NO. 69580