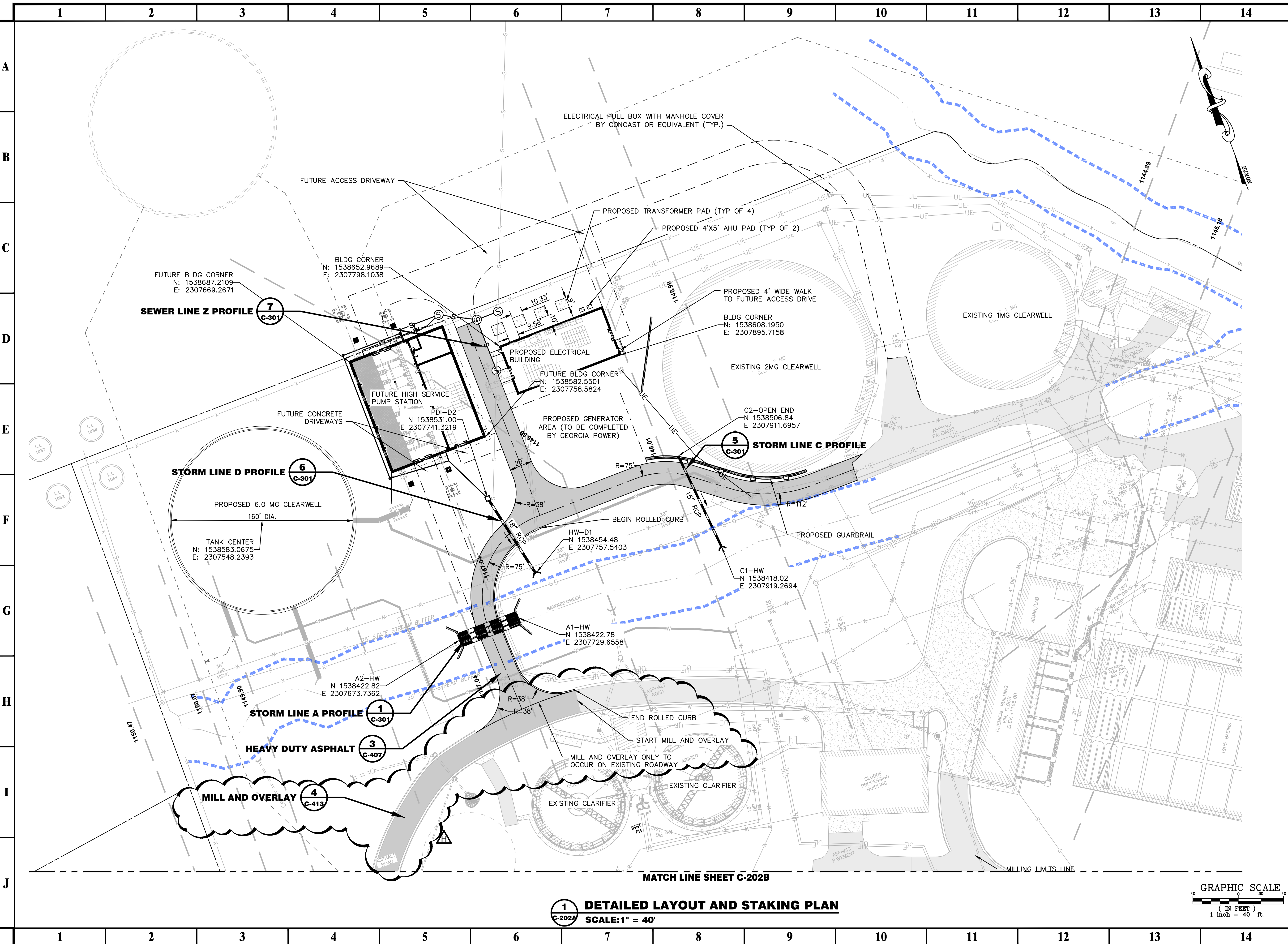
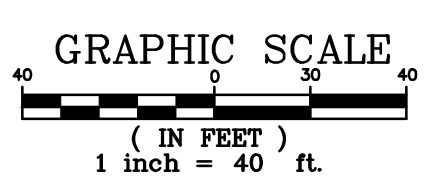


P:\PE\A-Z\City of Cumming\2024-0124-Cumming-PWPF Phase 2 Clearwell Improvements\3 ENGINEERING Drawings\C-202 LAYOUT AND STAKING PLAN - 2024-0124.dwg Thu, 06/11/26 10:55 AM



1
C-202A **DETAILED LAYOUT AND STAKING PLAN**
SCALE: 1" = 40'



PRIME
A Status Team Company

3715 NORTHSIDE PARKWAY NW
300 NORTHCREEK SUITE 200
ATLANTA, GEORGIA 30327
404.425.7100

PROJECT:
PWPF PHASE 2
CLEARWELL
IMPROVEMENTS

PREPARED FOR:
CITY OF CUMMING

NO.	DATE	DESCRIPTION
A	10/11/24	ISSUED FOR 30% REVIEW
B	12/11/24	10% REVIEW RESUBMIT
C	01/29/25	ISSUED FOR 60% REVIEW
D	03/13/25	ISSUED FOR 90% REVIEW
E	02/06/26	ISSUED FOR 100% REVIEW
F	04/03/26	ISSUED FOR 100% REVIEW
G	04/21/26	ISSUED FOR BID
H	06/12/26	ADDENDUM 2

SEAL

DATE: 06/12/2026

© 2026 PRIME ENGINEERING, INC. Scales, as stated herein, are valid on the original drawing; the dimensions of which are 22 by 34 inches. These scales, noted herein, are hereby changed by the ratio of the overall sheet dimensions of the print to corresponding dimensions of the original drawing. This drawing is the property of PRIME ENGINEERING, INC. and is not to be reproduced, copied, or used in whole or in part. It is only to be used for the project and is not to be used on any other project. It is to be returned upon request.

DRAWING TITLE
DETAILED LAYOUT AND STAKING PLAN

DRAWING DATE 04/17/2026	DRAWN BY KIK	DESIGNED BY KIK	CHECKED BY RRM
DRAWING SCALE 1" = 40'	PROJECT NUMBER 2024-0124	DRAWING NUMBER C-202A	ISSUED FOR CONSTRUCTION