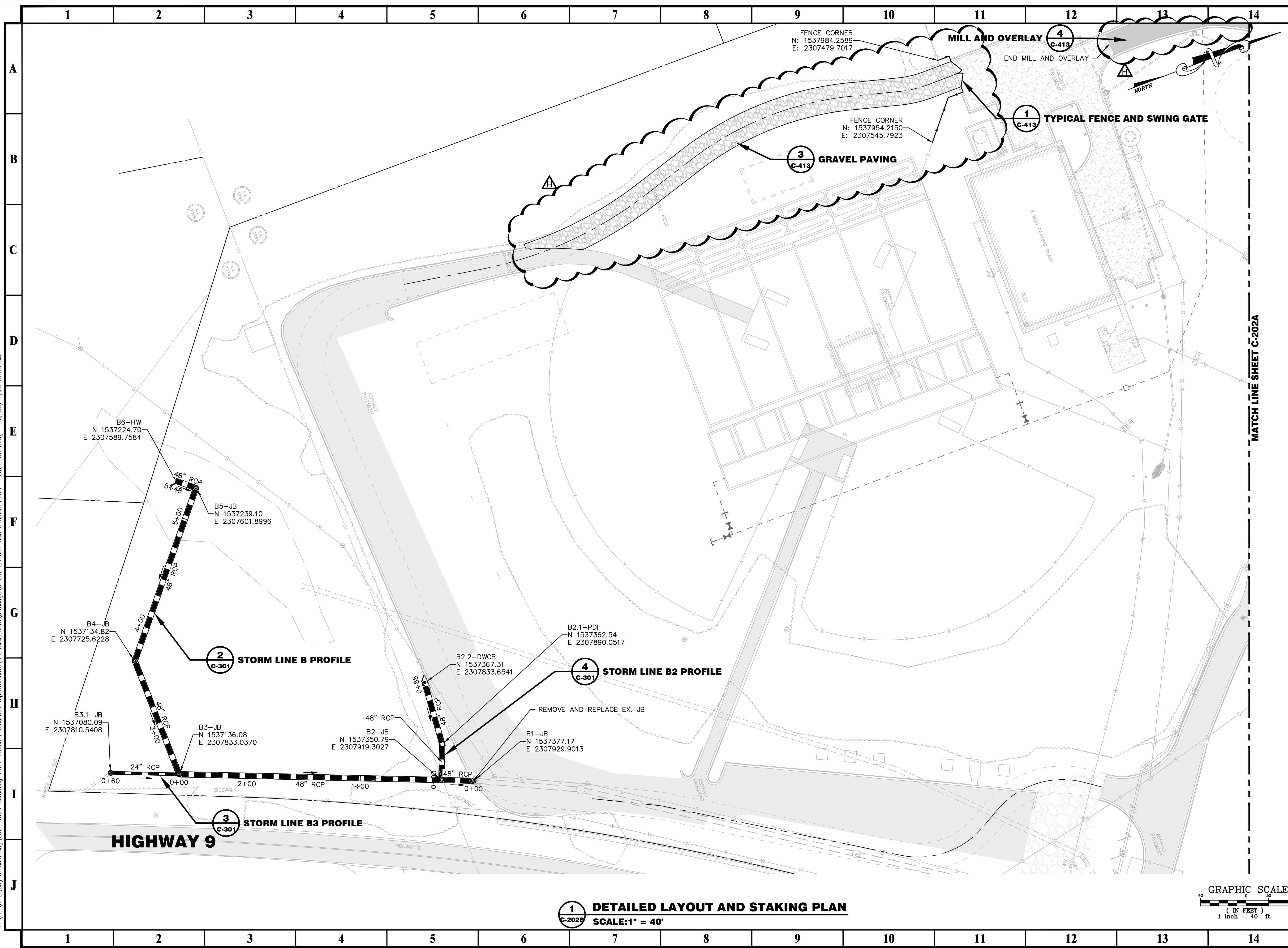
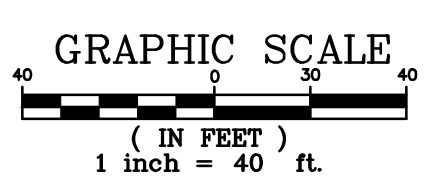


P:\PE\A-Z\City of Cumming\2024-0124_Cumming-PWPF Phase 2 Clearwell Improvements\3_ENGINEERING\Drawings\C-202_LAYOUT AND STAKING PLAN - 2024-0124.dwg Thu, 06/11/26 10:55 AM



1 DETAILED LAYOUT AND STAKING PLAN
 SCALE: 1" = 40'



MATCH LINE SHEET C-202A

PRIME
 A Stratus Team Company

3715 NORTHSIDE PARKWAY NW
 300 NORTHCREEK SUITE 200
 ATLANTA, GEORGIA 30327
 404.425.7100

PROJECT:
 PWPF PHASE 2
 CLEARWELL
 IMPROVEMENTS

PREPARED FOR:
 CITY OF CUMMING

NO.	DATE	DESCRIPTION
A	10/11/24	ISSUED FOR 30% REVIEW
B	12/17/24	30% REVIEW RESUBMIT
C	01/29/25	ISSUED FOR 60% REVIEW
D	05/13/25	ISSUED FOR 90% REVIEW
E	02/06/26	RESUBMITTED FOR 90% REVIEW
F	04/03/26	ISSUED FOR 100% REVIEW
G	04/21/26	ISSUED FOR BID
H	06/12/26	ADDENDUM 2

SEAL

DATE: 06/12/2026

© 2026 PRIME ENGINEERING, INC. Scales, as stated hereon, are valid on the original drawing; the dimensions of which are 22 by 34 inches. These scales, noted hereon, are hereby changed by the ratio of the overall sheet dimensions of the print to corresponding dimensions of the original drawing. This drawing is the property of PRIME ENGINEERING, INCORPORATED and is not to be reproduced or copied in whole or in part. It is only to be used for the project and is not to be used on any other project. It is to be returned upon request.

DRAWING TITLE
 DETAILED LAYOUT
 AND STAKING
 PLAN

DRAWING DATE 04/17/2026	DRAWN BY KIK
DRAWING SCALE 1" = 40'	DESIGNED BY KIK
PROJECT NUMBER 2024-0124	CHECKED BY RRM
DRAWING NUMBER C-202B	ISSUED FOR CONSTRUCTION