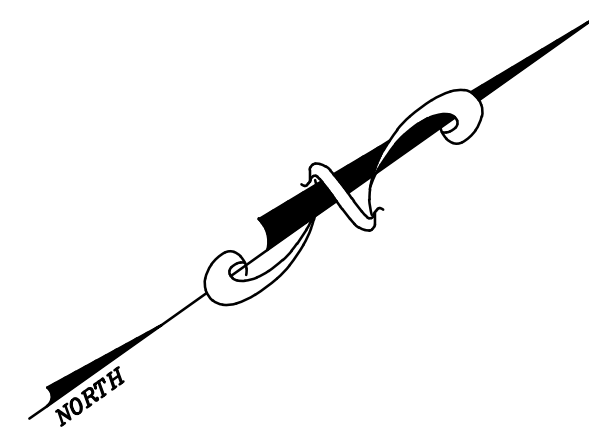


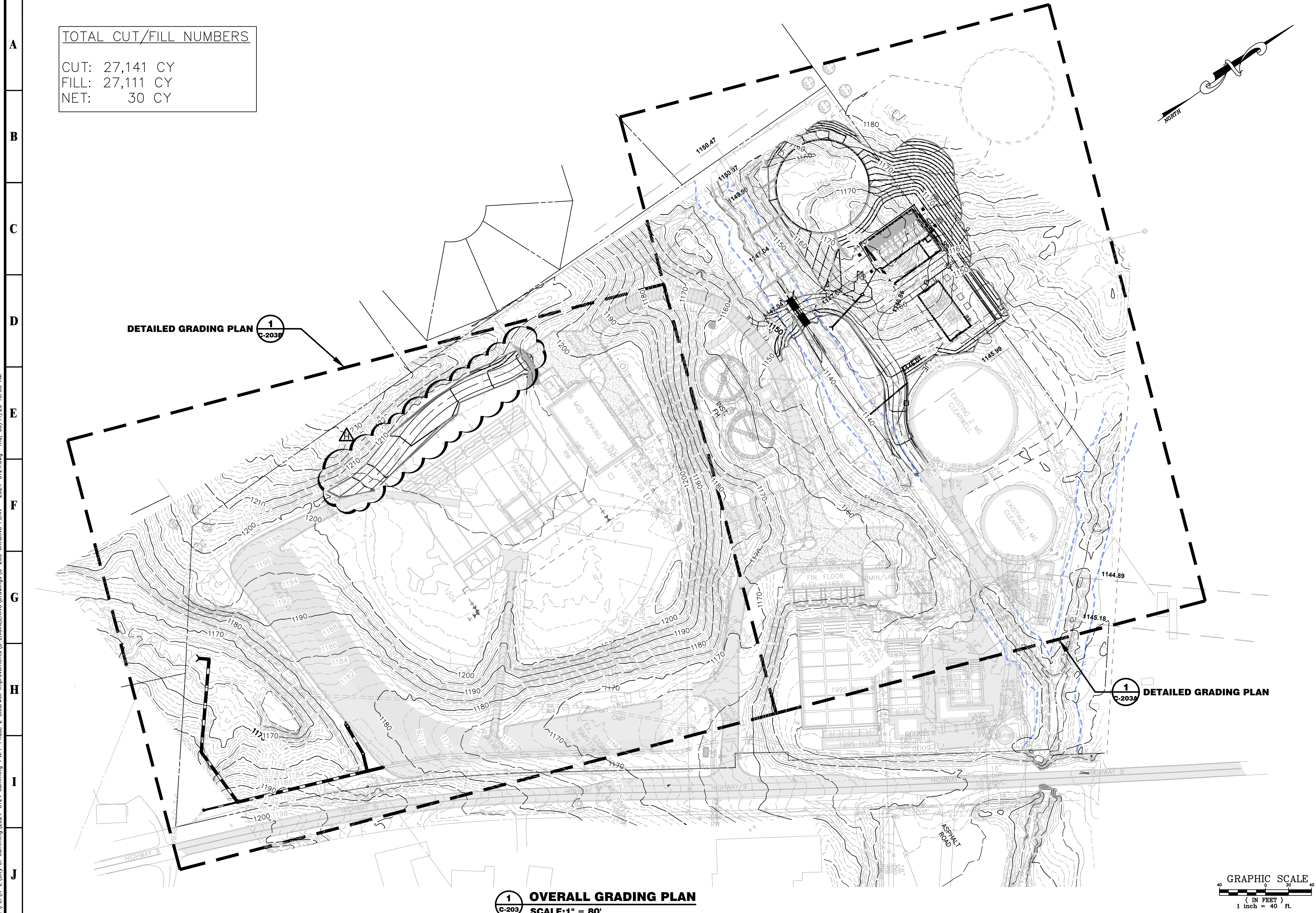
1 2 3 4 5 6 7 8 9 10 11 12 13 14

TOTAL CUT/FILL NUMBERS

CUT: 27,141 CY
 FILL: 27,111 CY
 NET: 30 CY



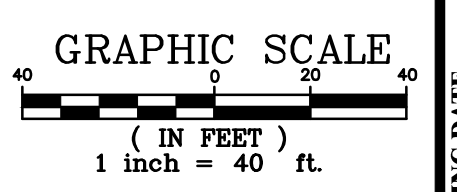
P:\PE\A-Z\City of Cumming 2024-0124_Cumming-PWPF Phase 2 Clearwell Improvements\C-203 GRADING PLAN - 2024-0124.dwg Thu, 06/11/26 10:55 AM



DETAILED GRADING PLAN 1 C-203

DETAILED GRADING PLAN 1 C-203

1 OVERALL GRADING PLAN
 C-203 SCALE: 1" = 80'



1 2 3 4 5 6 7 8 9 10 11 12 13 14

PRIME
 A Stratus Team Company

3715 NORTHSIDE PARKWAY NW
 300 NORTHCREEK SUITE 200
 ATLANTA, GEORGIA 30327
 404.425.7100

PROJECT:
**PWPF PHASE 2
 CLEARWELL
 IMPROVEMENTS**

PREPARED FOR:
CITY OF CUMMING

NO.	DATE	DESCRIPTION
A	10/11/24	ISSUED FOR 30% REVIEW
B	12/17/24	30% REVIEW RESUBMIT
C	01/29/25	ISSUED FOR 60% REVIEW
D	05/13/25	ISSUED FOR 90% REVIEW
E	02/06/26	ISSUED FOR 100% REVIEW
F	04/03/26	ISSUED FOR BID
G	06/12/26	ADDENDUM 2
H		

SEAL

DATE: 06/12/2026

© 2026 PRIME ENGINEERING, INC. Scales, as stated hereon, are valid on the original drawing; the dimensions of which are 22 by 34 inches. These scales, noted hereon, are hereby changed by the ratio of the overall sheet dimensions of the print to corresponding dimensions of the original drawing. This drawing is the property of PRIME ENGINEERING, INC. and is not to be reproduced or copied in whole or in part. It is only to be used for the project and is not to be used on any other project. It is to be returned upon request.

DRAWING TITLE

**OVERALL
 GRADING PLAN**

DRAWING DATE	04/17/2026
DRAWN BY	KLK
DESIGNED BY	KLK
CHECKED BY	RRM
PROJECT NUMBER	2024-0124
DRAWING NUMBER	C-203

ISSUED FOR CONSTRUCTION