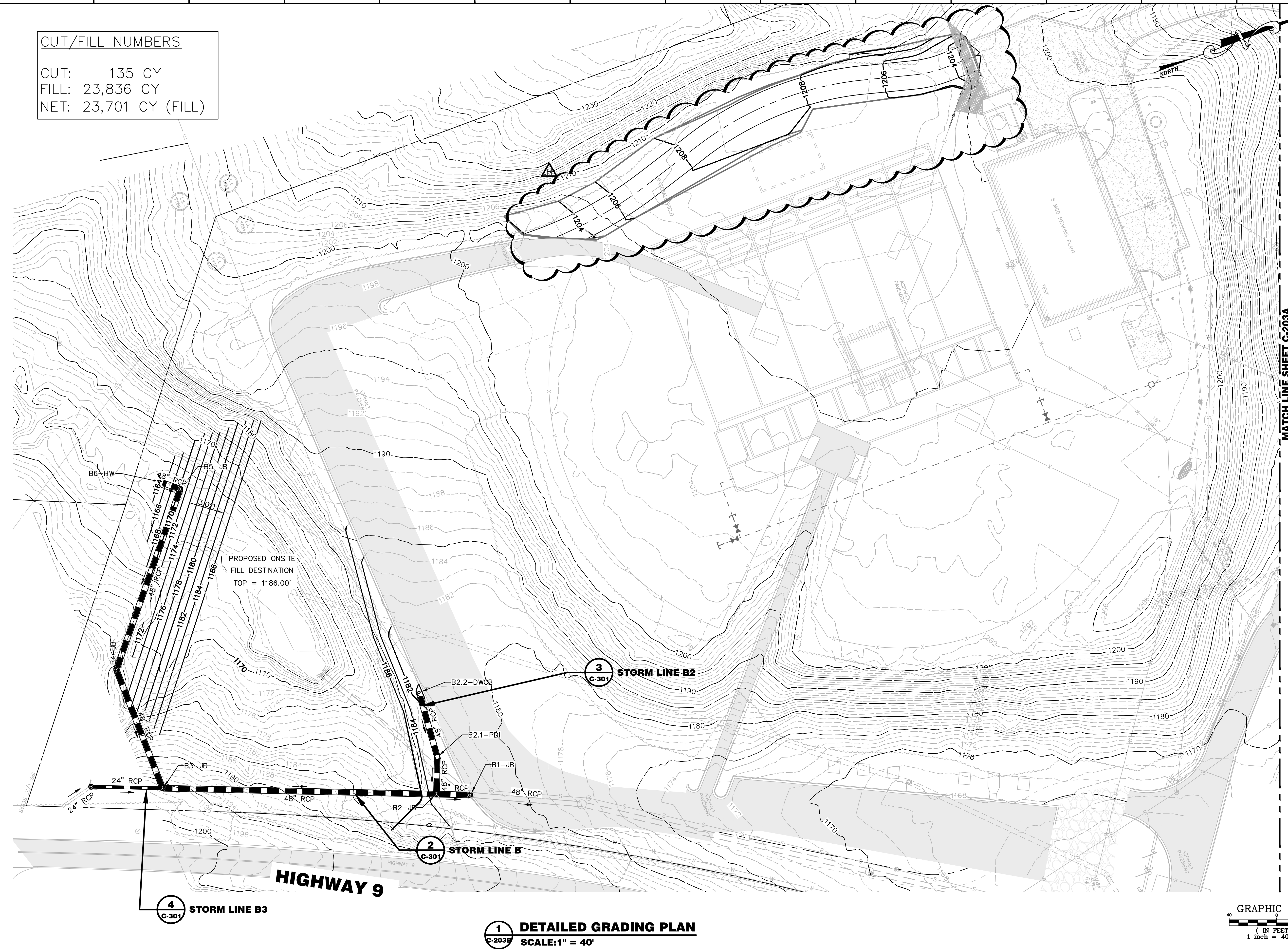


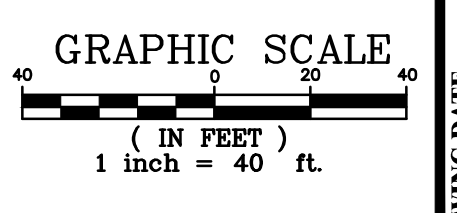
P:\PE\A-Z\City of Cumming\2024-0124-Cumming-PWPF Phase 2 Clearwell Improvements\3 ENGINEERING Drawings\C-203 GRADING PLAN - 2024-0124.dwg Thu, 06/11/26 10:55 AM

CUT/FILL NUMBERS
 CUT: 135 CY
 FILL: 23,836 CY
 NET: 23,701 CY (FILL)



CUT/FILL NUMBERS
 CUT: 135 CY
 FILL: 23,836 CY
 NET: 23,701 CY (FILL)

MATCH LINE SHEET C-203A



1 DETAILED GRADING PLAN
 SCALE: 1" = 40'

PRIME
 A Status Team Company
 3715 NORTHSIDE PARKWAY NW
 300 NORTHCREEK SUITE 200
 ATLANTA, GEORGIA 30327
 404.425.7100

PROJECT:
 PWPF PHASE 2
 CLEARWELL
 IMPROVEMENTS
PREPARED FOR:
 CITY OF CUMMING

NO.	DATE	DESCRIPTION
A	10/11/24	ISSUED FOR 30% REVIEW
B	12/11/24	10% REVIEW RESUBMIT
C	01/29/25	ISSUED FOR 60% REVIEW
D	03/13/25	ISSUED FOR 90% REVIEW
E	02/06/26	REISSUED FOR 90% REVIEW
F	04/03/26	ISSUED FOR 100% REVIEW
G	04/21/26	ISSUED FOR BID
H	06/12/26	ADDENDUM 2

SEAL

 DATE: 06/12/2026

© 2026 PRIME ENGINEERING, INC. Scales, as stated herein, are valid on the original drawing; the dimensions of which are 22 by 34 inches. These scales, noted herein, are hereby changed by the ratio of the overall sheet dimensions of the print to corresponding dimensions of the original drawing. This drawing is the property of PRIME ENGINEERING, INC. and is not to be reproduced, copied, or used in whole or in part. It is only to be used for the project and is not to be used on any other project. It is to be returned upon request.

DRAWING TITLE
DETAILED GRADING PLAN

DRAWING DATE	04/17/2026
DRAWING SCALE	1" = 40'
PROJECT NUMBER	2024-0124
DRAWING NUMBER	C-203B
DRAWN BY	KLK
DESIGNED BY	KLK
CHECKED BY	RRM
ISSUED FOR CONSTRUCTION	