

GROVE CREEK WPCP

CITY OF COMMERCE, GA
GMC PROJECT # CATL230033



CITY OF COMMERCE, GA



LOCATION MAP



MARCH 2025

BID SET



Georgia One-Call Center
1-800-282-7411
Call at Least Two Working Days
Before You Dig
It's The Law

CLIENT PROJECT TEAM

DR. J. CLARK HILL, III	MAYOR
KEITH BURCHETT	MAYOR PRO-TEM
MATTHEW HAILEY	CITY MANAGER
JOSH ALLISON	WATER & SEWER SUPERINTENDENT
TADD EDMONDSON	WASTEWATER SUPERINTENDENT

DESIGN PROJECT TEAM

GOODWYN MILLS CAWOOD, LLC	CIVIL, PROCESS, ARCHITECTURAL
BFIELD ENGINEERING	ELECTRICAL, MECHANICAL, PLUMBING
DAY STRUCTURES	STRUCTURAL

I CERTIFY THAT I HAVE BEEN IN RESPONSIBLE CHARGE OF THE DESIGN OF THIS PROJECT IN ACCORDANCE WITH THE RULES OF THE GEORGIA STATE BOARD OF REGISTRATION FOR PROFESSIONAL ENGINEERS AND LAND SURVEYORS. I FURTHER CERTIFY, TO THE BEST OF MY KNOWLEDGE AND BELIEF, THAT THESE PLANS AND SPECIFICATION WERE PREPARED IN ACCORDANCE WITH CURRENT STANDARD ENGINEERING PRACTICES AND ACCURATELY REFLECT THE DESIGN DEVELOPMENT REPORT (DDR) PREVIOUSLY REVIEWED AND CONCURRED IN BY EPD. I FURTHER CERTIFY THAT THE SYSTEM AS DESIGNED CAN REASONABLY BE EXPECTED TO CONSISTENTLY MEET ALL CURRENTLY APPLICABLE PERMIT LIMITS, CONDITIONS, AND REGULATORY REQUIREMENTS, PROVIDED THE FACILITY IS CONSTRUCTED AS DESIGNED AND PROPERLY OPERATED AND MAINTAINED.

ENGINEER'S SIGNATURE *Graham S. Sizemore*

COMMERCE 2.0 MGD
GROVE CREEK WPCP
COMMERCE, GA

CATL230033

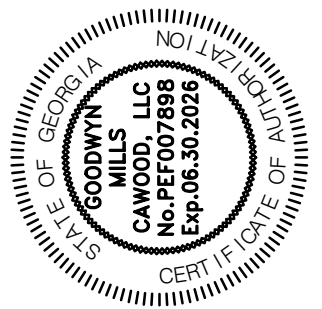


TITLE SHEET

G-001

ISSUE	DATE
30% Submittal	05.30.2024
60% Submittal	08.29.2024
90% Submittal	11.27.2024
Bid Set	03.19.2025

Project Manager:	CW
Engineer:	GS
Designer:	GS
Drawn By:	



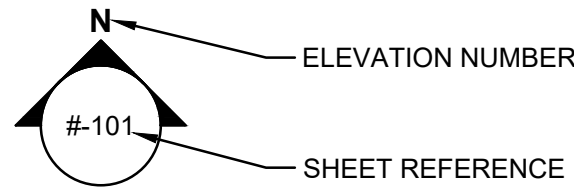
GMC
6120 Powers Ferry Road NW, Suite 200
Atlanta, GA 30339
T 770.952.2481

--	--	--	--	--	--	--	--	--	--	--	--	--	--	--	--	--	--	--	--	--	--	--	--	--	--	--	--	--	--	--	--	--	--	--	--	--	--	--	--	--	--	--	--	--	--	--	--	--	--	--	--	--	--	--	--	--	--	--	--	--	--	--	--	--	--	--	--	--	--	--	--	--	--	--	--	--	--	--	--	--	--	--	--	--	--	--	--	--	--	--	--	--	--	--	--	--	--	--	--	--	--	--	--	--	--	--	--	--	--	--	--	--	--	--	--	--	--	--	--	--	--	--	--	--	--	--	--	--	--	--	--	--	--	--	--	--	--	--	--	--	--	--	--	--	--	--	--	--	--	--	--	--	--	--	--	--	--	--	--	--	--	--	--	--	--	--	--	--	--	--	--	--	--	--	--	--	--	--	--	--	--	--	--	--	--	--	--	--	--	--	--	--	--	--	--	--	--	--	--	--	--	--	--	--	--	--	--	--	--	--	--	--	--	--	--	--	--	--	--	--	--	--	--	--	--	--	--	--	--	--	--	--	--	--	--	--	--	--	--	--	--	--	--	--	--	--	--	--	--	--	--	--	--	--	--	--	--	--	--	--	--	--	--	--	--	--	--	--	--	--	--	--	--	--	--	--	--	--	--	--	--	--	--	--	--	--	--	--	--	--	--	--	--	--	--	--	--	--	--	--	--	--	--	--	--	--	--	--	--	--	--	--	--	--	--	--	--	--	--	--	--	--	--	--	--	--	--	--	--	--	--	--	--	--	--	--	--	--	--	--	--	--	--	--	--	--	--	--	--	--	--	--	--	--	--	--	--	--	--	--	--	--	--	--	--	--	--	--	--	--	--	--	--	--	--	--	--	--	--	--	--	--	--	--	--	--	--	--	--	--	--	--	--	--	--	--	--	--	--	--	--	--	--	--	--	--	--	--	--	--	--	--	--	--	--	--	--	--	--	--	--	--	--	--	--	--	--	--	--	--	--	--	--	--	--	--	--	--	--	--	--	--	--	--	--	--	--	--	--	--	--	--	--	--	--	--	--	--	--	--	--	--	--	--	--	--	--	--	--	--	--	--	--	--	--	--	--	--	--	--	--	--	--	--	--	--	--	--	--	--	--	--	--	--	--	--	--	--	--	--	--	--	--	--	--	--	--	--	--	--	--	--	--	--	--	--	--	--	--	--	--	--	--	--	--	--	--	--	--	--	--	--	--	--	--	--	--	--	--	--	--	--	--	--	--	--	--	--	--	--	--	--	--	--	--	--	--	--	--	--	--	--	--	--	--	--	--	--	--	--	--	--	--	--	--	--	--	--	--	--	--	--	--	--	--	--	--	--	--	--	--	--	--	--	--	--	--	--	--	--	--	--	--	--	--	--	--	--	--	--	--	--	--	--	--	--	--	--	--	--	--	--	--	--	--	--	--	--	--	--	--	--	--	--	--	--	--	--	--	--	--	--	--	--	--	--	--	--	--	--	--	--	--	--	--	--	--	--	--	--	--	--	--	--	--	--	--	--	--	--	--	--	--	--	--	--	--	--	--	--	--	--	--	--	--	--	--	--	--	--	--	--	--	--	--	--	--	--	--	--	--	--	--	--	--	--	--	--	--	--	--	--	--	--	--	--	--	--	--	--	--	--	--	--	--	--	--	--	--	--	--	--	--	--	--	--	--	--	--	--	--	--	--	--	--	--	--	--	--	--	--	--	--	--	--	--	--	--	--	--	--	--	--	--	--	--	--	--	--	--	--	--	--	--	--	--	--	--	--	--	--	--	--	--	--	--	--	--	--	--	--	--	--	--	--	--	--	--	--	--	--	--	--	--	--	--	--	--	--	--	--	--	--	--	--	--	--	--	--	--	--	--	--	--	--	--	--	--	--	--	--	--	--	--	--	--	--	--	--	--	--	--	--	--	--	--	--	--	--	--	--	--	--	--	--	--	--	--	--	--	--	--	--	--	--	--	--	--	--	--	--	--	--	--	--	--	--	--	--	--	--	--	--	--	--	--	--	--	--	--	--	--	--	--	--	--	--	--	--	--	--	--	--	--	--	--	--	--	--	--	--	--	--	--	--	--	--	--	--	--	--	--	--	--	--	--	--	--	--	--	--	--	--	--	--	--	--	--	--	--	--	--	--	--	--	--	--	--	--	--	--	--	--	--	--	--	--	--	--	--	--	--	--	--	--	--	--	--	--	--	--	--	--	--	--	--	--	--	--	--	--	--	--	--	--	--	--	--	--	--	--	--	--	--	--	--	--	--	--	--	--	--	--	--	--	--	--	--	--	--	--	--	--	--	--	--	--	--	--	--	--	--	--	--	--	--	--	--	--	--	--	--	--	--	--	--	--	--	--	--	--	--	--	--	--	--	--	--	--	--	--	--	--	--	--	--	--	--	--	--	--	--	--	--	--	--	--	--	--	--	--	--	--	--	--	--	--	--	--	--	--	--	--	--	--	--	--	--	--	--	--	--	--	--	--	--	--	--	--	--	--	--	--	--	--	--	--	--	--	--	--	--	--	--	--	--	--	--	--	--	--	--	--	--	--	--	--	--	--	--	--	--	--	--	--	--	--	--	--	--	--	--	--	--	--	--	--	--	--	--	--	--	--	--	--	--	--	--	--	--	--	--	--	--	--	--	--	--	--	--	--	--	--	--	--	--	--	--	--	--	--	--	--	--	--	--	--	--	--	--	--	--	--	--	--	--	--	--	--	--	--	--	--	--	--	--	--	--	--	--	--	--	--	--	--	--	--	--	--	--	--	--	--	--	--	--	--	--	--	--	--	--	--	--	--	--	--	--	--	--	--	--	--	--	--	--	--	--	--	--	--	--	--	--	--	--	--	--	--	--	--	--	--	--	--	--	--	--	--	--	--	--	--	--	--	--	--	--	--	--	--	--	--	--	--	--	--	--	--	--	--	--	--	--	--	--	--	--	--	--	--	--	--	--	--	--	--	--	--	--	--	--	--	--	--	--	--	--	--	--	--	--	--	--	--	--	--	--	--	--	--	--	--	--	--	--	--	--	--	--	--	--	--	--	--	--	--	--	--	--	--	--	--	--	--	--	--	--	--	--	--	--	--	--	--	--	--	--	--	--	--	--	--	--	--	--	--	--	--	--	--	--	--	--	--	--	--	--	--	--	--	--	--	--	--	--	--	--	--	--	--	--	--

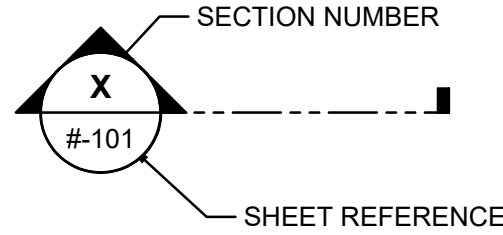
[illegible]

GRAPHICS LEGEND

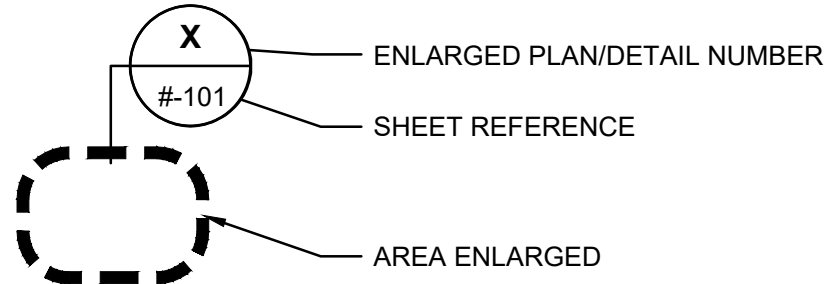
ELEVATION INDICATOR



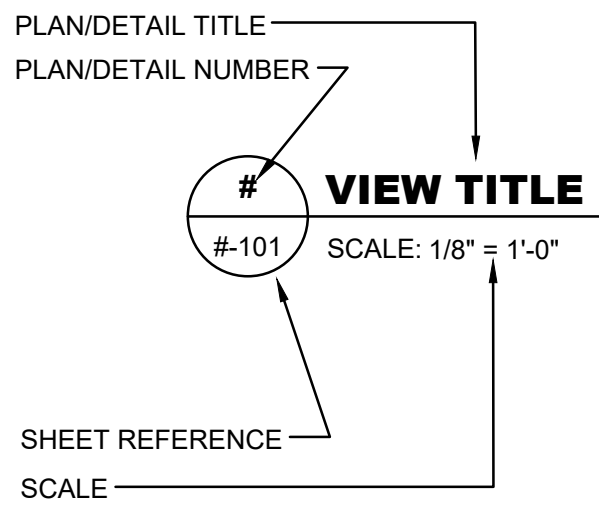
SECTION INDICATOR



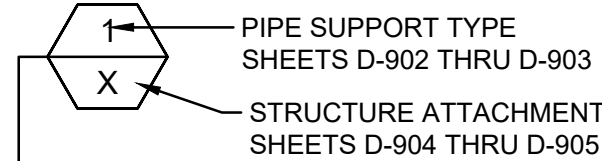
ENLARGED PLAN/DETAIL INDICATOR



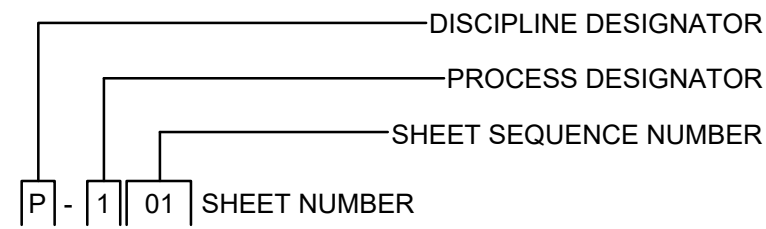
DRAWING TITLE



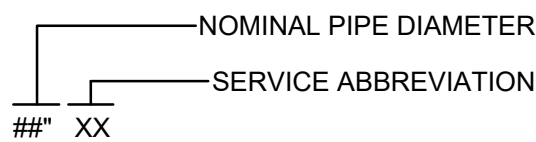
PIPE SUPPORT INDICATOR



SHEET NUMBERING



PIPE LINE IDENTIFICATION



PROCESS DESIGNATORS

PROCESS SHEETS (WASTEWATER)	DESIGNATOR
NOTES, LEGEND, ABBREVIATIONS, DEMOLITION, EXISTING CONDITIONS, ETC.	0
PRELIMINARY TREATMENT	1
PRIMARY TREATMENT	2
BIOLOGICAL TREATMENT	3
SECONDARY TREATMENT	4
TERTIARY TREATMENT	5
DISINFECTION AND EFFLUENT PUMPING	6
SLUDGE STORAGE AND PROCESSING	7
MISCELLANEOUS SYSTEMS	8
DETAILS / SCHEDULES	9

CIVIL DESIGNATORS

CIVIL	DESIGNATOR
NOTES, LEGEND, ABBREVIATIONS, DEMOLITION, EXISTING CONDITIONS, ETC.	0
SITE PLAN AND GEOMETRIC CONTROLS	1
GRADING AND DRAINAGE	2
UTILITIES/YARD PIPING	3
ROAD PLAN AND PROFILES (IF REQUIRED)	4
ROAD CROSS SECTIONS (IF REQUIRED)	5
SEDIMENT AND EROSION CONTROL	6
RESERVED	7
RESERVED	8
DETAILS / SCHEDULES	9

OWNER

DESCRIPTION	NAME	PHONE NUMBER	EMAIL ADDRESS
CITY MANAGER	MATTHEW HAILEY	706.423.5125	MHAILEY@COMMERCEGA.GOV
WWTP SUPERINTENDENT	TAD EDMONSON	770.374.3288	TEDMONSON@COMMERCEGA.GOV

CONTRACTOR

DESCRIPTION	NAME	PHONE NUMBER	EMAIL ADDRESS
PROJECT MANAGER	TBD		
SUPERINTENDENT	TBD		

ENGINEER

DESCRIPTION	NAME	PHONE NUMBER	EMAIL ADDRESS
PROJECT MANAGER	CHARLES WELCH	770.952.2481 EXT. 103	CHARLES.WELCH@GMCNETWORK.COM
ENGINEER	GRAHAM SIZEMORE, PE	770.952.2481 EXT. 143	GRAHAM.SIZEMORE@GMCNETWORK.COM
INSPECTOR	TONY VAN DE RYT	770.952.2481 EXT. 110	TONY.VANDERYT@GMCNETWORK.COM

PIPE SYMBOLS

DESCRIPTION	SINGLE LINE	DOUBLE LINE
EXISTING BURIED PIPE		
EXISTING ABOVE GRADE PIPE		
NEW BURIED PIPE		
NEW ABOVE GRADE PIPE		
WELDED JOINT		
FLANGED JOINT		
FLANGED ADAPTOR		
FLANGED COUPLING		
MECHANICAL JOINT		
JOINT		
EXPANSION JOINT		

HATCHING LEGEND

DESCRIPTION	EXISTING	PROPOSED
ASPHALT PAVING (PLAN)		
ALUMINUM GRATING		
CONCRETE (ELEVATION)		
CONCRETE (PLAN)		
CONCRETE (SECTION)		
CRUSHED STONE (SECTION)		
EARTH OR BACKFILL (SECTION)		
GRAVEL DRIVE (PLAN)		
GROUT FILL (PLAN & SECTION)		
LAKE, RIVER OR POND (PLAN)		
REMOVAL OR DEMOLITION (PLAN & SECTION)		
UNPAVED DRIVE (PLAN)		

DISCIPLINE DESIGNATORS

DISCIPLINE	DESIGNATOR
GENERAL	G
HAZARDOUS MATERIALS	H
INSTRUMENTATION	I
DEMOLITION	X
SURVEY/MAPPING	V
GEOTECHNICAL	B
CIVIL	C
LANDSCAPE	L
STRUCTURAL	S
ARCHITECTURAL	A
FIRE PROTECTION	F
MECHANICAL	M
PLUMBING	P
PROCESS	D
ELECTRICAL	E

GENERAL NOTES

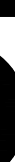
1. THE CONTRACTOR IS EXPECTED TO CAREFULLY EXAMINE THE PLAN, PROPOSAL AND SITE OF THE WORK, THEREFORE, IT WILL BE ASSUMED THAT THE BIDDER HAS SATISFIED HIMSELF AS TO THE CONDITIONS TO BE ENCOUNTERED IN REGARDS TO THE CHARACTER, QUALITY, AND QUANTITIES OF WORK TO BE PERFORMED AND MATERIALS TO BE FURNISHED, AND AS TO THE REQUIREMENTS OF THE PLANS, SPECIFICATIONS, SPECIAL PROVISIONS AND CONTRACT. THE SUBMISSION OF A PROPOSAL BY A BIDDER WILL BE CONSIDERED PRIMA FACIE EVIDENCE THAT THE BIDDER HAS MADE SUCH AN EXAMINATION.
2. THE CONTRACTOR IS REQUIRED TO MAINTAIN AN AS-BUILT SET OF DRAWINGS THROUGHOUT PROJECT CONSTRUCTION. THE COMPLETE AS-BUILT MAP WILL CONTAIN ALL INSTALLED ELECTRICAL, STRUCTURAL ENTITIES, LINES, VALVES, METERS, AND CONNECTIONS WITH REFERENCE DISTANCES TO PERMANENT ABOVE GROUND STRUCTURES.
3. ALL EXISTING UTILITIES SHOWN ABOVE AND BELOW GROUND ARE APPROXIMATE AND ARE NOT NECESSARILY ALL THAT EXIST. THE DETERMINATION OF THE EXISTENCE, LOCATION, AND DEPTH OF ALL UTILITIES SHALL BE THE RESPONSIBILITY OF THE CONTRACTOR.
4. ALL MATERIALS AND WORKMANSHIP SHALL BE GUARANTEED BY CONTRACTOR FOR ONE YEAR AFTER ACCEPTANCE BY THE OWNER PER SPECIFICATION 1030.
5. IN THE EVENT THAT THERE IS A DISCREPANCY BETWEEN THE CIVIL DRAWINGS AND THE ARCHITECTURAL/STRUCTURAL DRAWINGS, THE ARCHITECTURAL/STRUCTURAL DRAWINGS SHALL HAVE PRECEDENCE. THE CONTRACTOR SHALL ADVISE THE ENGINEER OF ANY CONFLICT IN THE PLANS/SPECS FOR CLARIFICATION PRIOR TO BID. SHOULD CONFLICTING DOCUMENTS NOT BE CLARIFIED AT THE REQUEST OF THE BIDDING CONTRACTOR, THE MORE COSTLY ALTERNATIVE AS IDENTIFIED IN THE PLAN & SPECS SHALL BE INCLUDED IN THE PRICE BID.
6. ALL HAZARDOUS SUBSTANCES USED FOR THIS PROJECT, INCLUDING, BUT NOT LIMITED TO, PAINT, OIL, GREASE, AND OTHER PETROLEUM PRODUCTS SHALL BE STORED IN ACCORDANCE WITH "SPILL PREVENTION, CONTROL & COUNTERMEASURE" REGULATIONS. THESE SUBSTANCES SHALL BE STORED AWAY FROM STORM DRAINS, DITCHES, AND GUTTERS IN WATERTIGHT CONTAINERS. DISPOSAL OF THESE SUBSTANCES SHALL BE IN ACCORDANCE WITH STATE & FEDERAL AGENCY REGULATIONS. CONTRACTOR SHALL PROVIDE ADEQUATE TRASH CONTAINERS ON SITE FOR THE DISPOSAL OF CONSTRUCTION MATERIALS WASTE. CONTRACTOR SHALL BE RESPONSIBLE FOR PREVENTING ANY TRASH OR OTHER POLLUTANTS FROM ENTERING STORM DRAINS & WATERS OF THE STATE.

GENERAL NOTES, LEGENDS, & SYMBOLS

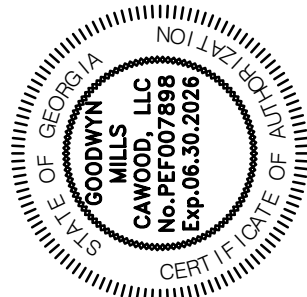
COMMERCE 2.0 MGD
BROVE CREEK WPCP
COMMERCE, GA

G-005

CATL230033

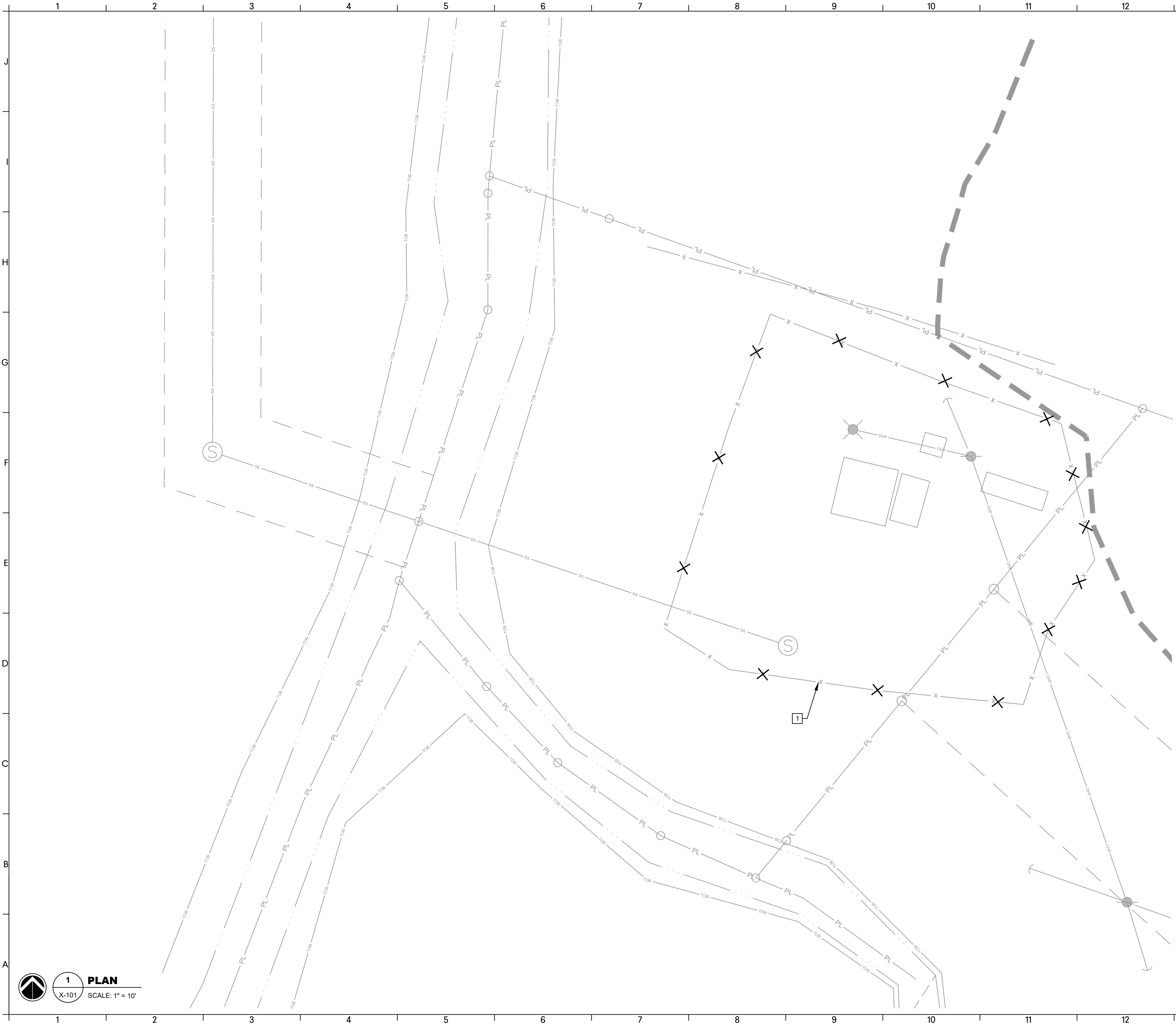


6120 Powers Ferry Road NW, Suite 200
Atlanta, GA 30339
T 770.952.2481



ISSUE	DATE
30% Submittal	05.30.2024
60% Submittal	08.29.2024
90% Submittal	11.27.2024
Bid Set	03.19.2025
Project Manager:	CW
Engineer:	GS
Designer:	GS
Drawn By:	





KEY NOTES: #

1. DEMO, REMOVE AND DISPOSE OF EXISTING SITE FENCING

1

PLAN

X-101

SCALE: 1" = 10'

COMMERCE 2.0 MGD
GROVE CREEK WPCP
COMMERCE, GA



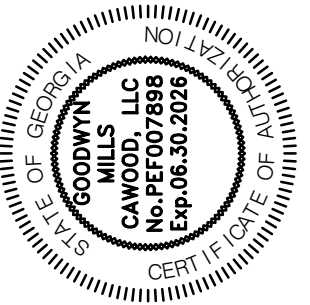
CIVIL SITE PLAN -
INFLUENT PUMP
STATION
DEMOLITION PLAN

X-101

CATL230033

ISSUE	DATE
30% Submittal	05.30.2024
60% Submittal	08.29.2024
90% Submittal	11.27.2024
Bid Set	03.19.2025

Project Manager:	CW
Engineer:	GS
Designer:	GS
Drawn By:	



GMC

6120 Powers Ferry Road NW, Suite 200
Atlanta, GA 30339
T 770.952.2481