

RFI #1: Solids Processing Pump Station - Floor Drains

Status	Open		
To	Steve Scarlett City of Atlanta	From	Brandon Dow (Lakeshore Engineering)
Date Initiated	Apr 25, 2022	Due Date	May 2, 2022
Location		Project Stage	Course of Construction
Cost Impact	Yes (Unknown)	Schedule Impact	Yes (Unknown)
Spec Section		Cost Code	
Drawing Number	M14	Reference	
Linked Drawings			
Received From	Brandon Dow (Lakeshore Engineering)		
Copies To			

Activity

Question

Question from Brandon Dow Lakeshore Engineering on Monday, Apr 25, 2022 at 09:21 AM EDT

After jetting the floor drains in the solids processing pump station we could not get a camera into the drains. The floor drains appear to be rusted thru and draining into the area under the building. We suggest the following:

- Cutting a 2' wide trench into the existing concrete
- Removing the existing floor drains and piping
- Evaluating the existing subgrade (fix if needed)
- Install a embedded trench drain system (Please advise size and type of trench drain) in place of the floor drain system
- Run the new trench drain line to Manhole - 5

Attachments

[Solids Proc PS - floor drain sketch.pdf](#)

Awaiting an Official Response

Response:

See attached revised sheets C-008, C-009, C-010, C-011.
See attached new sheets RFI-01A and RFI-01B.

BY: S. Hobi/D. Wilson

Date: 9/26/2022

RFI #1: Solids Processing Pump Station - Floor Drains

Status	Open		
To	Steve Scarlett City of Atlanta	From	Brandon Dow (Lakeshore Engineering)
Date Initiated	Apr 25, 2022	Due Date	May 2, 2022
Location		Project Stage	Course of Construction
Cost Impact	Yes (Unknown)	Schedule Impact	Yes (Unknown)
Spec Section		Cost Code	
Drawing Number	M14	Reference	
Linked Drawings			
Received From	Brandon Dow (Lakeshore Engineering)		
Copies To			

Activity

Question

Question from Brandon Dow Lakeshore Engineering on Monday, Apr 25, 2022 at 09:21 AM EDT

After jetting the floor drains in the solids processing pump station we could not get a camera into the drains. The floor drains appear to be rusted thru and draining into the area under the building. We suggest the following:

- Cutting a 2' wide trench into the existing concrete
- Removing the existing floor drains and piping
- Evaluating the existing subgrade (fix if needed)
- Install a embedded trench drain system (Please advise size and type of trench drain) in place of the floor drain system
- Run the new trench drain line to Manhole - 5

Attachments

[Solids Proc PS - floor drain sketch.pdf](#)

Awaiting an Official Response

Response:

Additional information is needed. Please provide existing horizontal and vertical information for the 8" abandoned sludge line and the 42" SBF line adjacent to the Solids Processing Pump Station to support routing of proposed drain line.

BY: T. Tittle/D. Wilson

Date: 6/20/2022

PREVIOUS RESPONSE

GEORGIA UNIFORM CODING SYSTEM

FOR SOIL EROSION AND SEDIMENT CONTROL PRACTICES GEORGIA SOIL AND WATER CONSERVATION COMMISSION

STRUCTURAL PRACTICES

CODE	PRACTICE	DETAIL	MAP SYMBOL	DESCRIPTION
Co	CONSTRUCTION EXIT			A crushed stone pad located at the construction site exit to provide a place for removing mud from tires thereby protecting public streets.
Sd1	SEDIMENT BARRIER			A barrier to prevent sediment from leaving the construction site. It may be sandbags, bales of straw or hay, brush, logs and poles, gravel, or a silt fence.
Sd2	INLET SEDIMENT TRAP			An impounding area created by excavating around a storm drain inlet. The excavated area will be filled and stabilized on completion of construction activities.
Tr	TREE PROTECTION			To protect desirable trees from injury during construction activity.

VEGETATIVE PRACTICES

CODE	PRACTICE	DETAIL	MAP SYMBOL	DESCRIPTION
Ds1	DISTURBED AREA STABILIZATION (WITH MULCHING ONLY)			Establishing temporary protection for disturbed areas where seedlings may not have a suitable growing season to produce an erosion retarding cover.
Ds2	DISTURBED AREA STABILIZATION (WITH TEMP SEEDING)			Establishing a temporary vegetative cover with fast growing seedlings on disturbed areas.
Ds3	DISTURBED AREA STABILIZATION (WITH PERM SEEDING)			Establishing a permanent vegetative cover such as trees, shrubs, vines, grasses, or legumes on disturbed areas.
Du	DUST CONTROL ON DISTURBED AREAS			Controlling surface and air movement of dust on construction site, roadways and similar sites.
Ss	SLOPE STABILIZATION			A protective covering used to prevent erosion and establish temporary or permanent vegetation on steep slopes, shore lines, or channels.

SITE NOTES:

- PROJECT IS LOCATED IN THE 15TH DISTRICT, LAND LOT 111, DEKALB COUNTY, GEORGIA.
- THE TOTAL LAND DISTURBANCE IS 0.92 ACRES.
- THE TOTAL CONTRIBUTING DRAINAGE AREA IS APPROXIMATELY 41 ACRES.
- THE RECEIVING WATER FOR THIS PROJECT IS INTRENCHMENT CREEK WHICH SUPPORTS WARM WATER FISHERIES.
- A PORTION OF THIS SITE DOES LIE WITHIN A SPECIAL FLOOD HAZARD ZONE "AE" OR "A". FIRM MAP NUMBER: 13089C0129; EFFECTIVE DATE: MAY 16, 2013.
- 24-HOUR CONTACT AND INSPECTIONS: TBD
ADDRESS: TBD
PHONE: TBD
- NON-EXEMPT ACTIVITIES SHALL NOT BE CONDUCTED WITHIN THE 25 OR 50-FOOT UNDISTURBED STREAM BUFFERS AS MEASURED FROM THE POINT OF WRESTED VEGETATION OR WITHIN 25-FEET OF THE COASTAL MARSHLAND BUFFER AS MEASURED FROM THE JURISDICTIONAL DETERMINATION LINE WITHOUT FIRST ACQUIRING THE NECESSARY VARIANCES AND PERMITS.

MANAGEMENT PLAN:

ALL EROSION CONTROL MEASURES SHALL BE INSPECTED DAILY AND AFTER EVERY RAINFALL. ALL NEEDED REPAIRS SHALL BE MADE IMMEDIATELY TO PREVENT FURTHER DAMAGE AND EROSION. STRUCTURES THAT SHALL BE INSPECTED INCLUDE:

- OUTLET PROTECTION: CHECK FOR EROSION AROUND OR BELOW THE RIPRAP AND IF STONES HAVE BEEN DISLODGED, MAKE NEEDED REPAIRS TO PREVENT FURTHER DAMAGE.
- SEEDING, FERTILIZING, AND MULCHING: SEEDED AREAS SHALL BE INSPECTED FOR FAILURE AND NECESSARY REPAIRS SHALL BE MADE IMMEDIATELY.
- SEDIMENT BARRIER: SEDIMENT SHALL BE REMOVED ONCE IT HAS ACCUMULATED TO ONE-HALF THE ORIGINAL HEIGHT OF THE BARRIER. SEDIMENT BARRIERS SHALL BE REPLACED PER MANUFACTURER'S RECOMMENDATIONS OR THE HEIGHT OF THE PRODUCT IS NOT MAINTAINING 80% OF ITS PROPERLY INSTALLED HEIGHT.
- STOCKPILES: STOCKPILES SHALL BE CHECKED FOR EROSION AND STABILIZED.
- CONSTRUCTION ENTRANCE/EXIT: INSPECT CONSTRUCTION ROAD SURFACE DAILY, MAINTAIN WHEN NEEDED IN A CONDITION TO PREVENT SEDIMENT AND TOPSOIL FROM LEAVING THE SITE. SEDIMENT TRANSPORTED TO MAIN PLANT ROAD AND TO PUBLIC ROADS SHALL BE REMOVED DAILY.
- PERMANENT CHANNEL: MAINTAIN ALL VEGETATION ADJACENT AND IN CHANNEL. IMMEDIATELY REPAIR DAMAGES DUE TO PIPING, SCOUR HOLES, OR BANK FAILURES.
- TOP SOIL PREPARATION: TOP SOIL FOR PERMANENT GRASSING SHALL BE CLEAN OF ROCKS LARGER THAN 1/2 INCH AND BE ABLE TO SUPPORT VEGETATION. TOP SOIL SHALL BE A MINIMUM OF 4 TO 6 INCHES THICK.
- SLOPE STABILIZATION: ALL EROSION CONTROL BLANKETS AND MATTING SHOULD BE INSPECTED PERIODICALLY FOLLOWING INSTALLATION, PARTICULARLY AFTER RAINSTORMS TO CHECK FOR EROSION AND UNDERMINING. ANY DISLOCATION OR FAILURE SHOULD BE REPAIRED IMMEDIATELY. IF WASHOUTS OR BREAKAGE OCCURS, REINSTALL THE MATERIAL AFTER REPAIRING DAMAGE TO THE SLOPE OR DITCH. CONTINUE TO MONITOR THESE AREAS UNTIL THEY BECOME PERMANENTLY STABILIZED.

CONSTRUCTION SEQUENCE:

- FOR EACH STAGE OF CONSTRUCTION THE FOLLOWING SEQUENCE WILL APPLY:
 - CONFIRM LOCATIONS OF AND CONSTRUCT/INSTALL CONSTRUCTION/TREE PROTECTION FENCES, SILT FENCES, INLET SEDIMENT TRAPS, AND THE CONSTRUCTION ENTRANCE AS SHOWN ON THE DRAWINGS.
 - CLEAR AND GRUB TO LIMITS REQUIRED FOR CONSTRUCTION AS SHOWN ON THE DRAWINGS. STOCKPILE FILL MATERIAL IN AREAS DESIGNATED FOR STOCKPILES AND DISPOSE OF WASTE MATERIALS.
 - BEGIN EXCAVATION AND GRADING ACTIVITIES AFTER ALL REQUIRED EROSION CONTROL MEASURES HAVE BEEN INSTALLED AND CONSTRUCTED.
 - ESTABLISH FINISHED GRADES ON SITE PERIMETER SLOPES AT EARLIEST POSSIBLE DATE. APPLY PERMANENT SOIL STABILIZATION IN ACCORDANCE WITH PLAN DETAILS.
 - DISTURBED AREAS SHALL BE STABILIZED WITH TEMPORARY VEGETATION OR MULCH IF LAND-DISTURBING ACTIVITIES CEASE FOR MORE THAN 14 CALENDAR DAYS.
- THE FOLLOWING SHALL APPLY AFTER CONSTRUCTION STAGES ARE COMPLETE:
 - AFTER FINAL STABILIZATION FOR THE PROJECT IS ACHIEVED, THE CONTRACTOR SHALL RESTORE THE SITE BY RESTORATION, MULCHING, AND VEGETATION IN ACCORDANCE WITH THE INFRASTRUCTURE CONSTRUCTION PROJECTS NPDES PERMIT GARI00002. THE CONTRACTOR SHALL RESTORE THE DISTURBED AREAS AS THE CONSTRUCTION PROGRESSES BETWEEN MANHOLES.
 - THE CONTRACTOR SHALL REMOVE THE BMPs ONCE THE DISTURBED AREA HAS BEEN RESTORED. THE BMPs SHALL BE INSPECTED FOR RE-USE FOR THE NEXT SECTION OF BMPs TO BE INSTALLED.

TREE PROTECTION

- WHEN DIGGING NEAR TREES, THE CONTRACTOR SHALL PRUNE ALL EXPOSED ROOTS ONE INCH IN DIAMETER OR LARGER ON THE SIDE OF THE TRENCH ADJACENT TO THE TREES. PRUNING SHALL CONSIST OF MAKING A CLEAN CUT FLUSH WITH THE SIDE OF THE TRENCH TO PROMOTE NEW ROOT GROWTH.
- THE CONTRACTOR SHALL PROTECT ALL TREES AND VEGETATION ON SITE EXCEPT AS NOTED ON THE PLANS OR APPROVED BY THE ENGINEER AND/OR DEKALB COUNTY.
- PROTECT THE TRUNKS OF ANY TREES BEING PRESERVED WITHIN THE TEMPORARY OR PERMANENT EASEMENTS WITH STRAPPED ON PLANKING OR SIMILAR PROTECTIVE DEVICE.
- TREE PROTECTION DEVICES MUST BE INSTALLED AND INSPECTED PRIOR TO ANY CLEARING, GRUBBING OR GRADING.

EROSION CONTROL

- EROSION CONTROL PRACTICES MUST COMPLY WITH THE MINIMUM BEST MANAGEMENT PRACTICES FOR EROSION CONTROL AND SHALL COMPLY WITH THE STANDARDS / SPECIFICATIONS IN THE "MANUAL FOR EROSION CONTROL AND SEDIMENT CONTROL IN GEORGIA", LATEST EDITION.
- EROSION AND SEDIMENT CONTROL DEVICES MUST BE INSTALLED AND INSPECTED PRIOR TO ANY LAND DISTURBANCE ACTIVITIES AS REQUIRED BY THE GOVERNING JURISDICTION AND/OR THE ENGINEER.
- IN CONCENTRATED FLOW AREAS, ALL SLOPES STEEPER THAN 2.5:1 AND WITH THE HEIGHT TEN FEET OR GREATER, AND CUTS AND FILLS WITHIN STREAM BUFFER, SHALL BE STABILIZED WITH THE APPROPRIATE EROSION CONTROL MATTING OR BLANKET.
- SEDIMENT / EROSION CONTROL DEVICES MUST BE CHECKED AFTER EACH STORM EVENT. EACH DEVICE IS TO BE MAINTAINED OR REPLACED IF SEDIMENT ACCUMULATION HAS REACHED ONE HALF THE CAPACITY OF THE DEVICE. THE CONTRACTOR SHALL FURNISH, INSTALL, AND MAINTAIN ANY ADDITIONAL EROSION CONTROL MEASURES AS DIRECTED BY THE GOVERNING JURISDICTION AND/OR THE ENGINEER.
- PERMANENT VEGETATION SHALL BE PLACED AT ALL AREAS GRADED TO FINAL GRADE IMMEDIATELY UPON COMPLETION. WHEN HAND PLANTING, MULCH (HAY OR STRAW) SHOULD BE UNIFORMLY SPREAD OVER SEEDED AREA WITHIN 24 HOURS OF SEEDING. DURING UNSUITABLE GROWING SEASONS, MULCH WILL BE USED AS A TEMPORARY COVER (DS1) ON SLOPES THAT ARE 2:1 OR STEEPER, MULCH WILL BE ANCHORED.
- THE CONTRACTOR SHALL INSTALL ALL EROSION CONTROL DEVICES AND ENSURE THAT THEY ARE PROPERLY FUNCTIONING PRIOR TO ANY LAND DISTURBANCE ACTIVITIES.
- THE ESCAPE OF SEDIMENT FROM THE SITE SHALL BE PREVENTED BY THE INSTALLATION OF EROSION AND SEDIMENT CONTROL MEASURES AND PRACTICES PRIOR TO LAND DISTURBING ACTIVITIES.
- EROSION CONTROL MEASURES WILL BE MAINTAINED AT ALL TIMES. IF FULL IMPLEMENTATION OF THE APPROVED PLAN DOES NOT PROVIDE FOR EFFECTIVE EROSION CONTROL, ADDITIONAL EROSION AND SEDIMENT CONTROL MEASURES SHALL BE IMPLEMENTED TO CONTROL OR TREAT THE SEDIMENT SOURCE.
- ANY DISTURBED AREAS LEFT EXPOSED FOR A PERIOD GREATER THAN 14 DAYS SHALL BE STABILIZED WITH MULCH OR TEMPORARY SEEDING.
- AMENDMENTS/REVISIONS TO THE ES&PC PLAN WHICH HAVE A SIGNIFICANT EFFECT ON BMPs WITH A HYDRAULIC COMPONENT MUST BE CERTIFIED BY THE DESIGN PROFESSIONAL.
- BUILDING MATERIALS AND BUILDING PRODUCTS NOT IN USE SHALL BE COVERED BY HEAVY PLASTIC.

POLLUTION CONTROLS

- BMP'S SUCH AS CONSTRUCTION EXITS, WATERING STATIONS, AND SWEEPERS MAY BE UTILIZED TO MINIMIZE OFF-SITE VEHICLE TRACKING OF SEDIMENTS AND THE GENERATION OF DUST.
- NON-EXEMPT ACTIVITIES SHALL NOT BE CONDUCTED WITHIN THE 25 OR 50-FOOT UNDISTURBED STREAM BUFFERS AS MEASURED FROM THE POINT OF WRESTED VEGETATION WITHOUT FIRST ACQUIRING THE NECESSARY VARIANCES AND PERMITS.
- PETROLEUM BASED PRODUCTS- CONTAINERS FOR PRODUCTS SUCH AS FUELS, LUBRICANTS, TARS WILL BE INSPECTED DAILY FOR LEAKS AND SPILLS. THIS INCLUDES ON-SITE VEHICLE AND MACHINERY DAILY INSPECTIONS AND REGULAR PREVENTATIVE MAINTENANCE OF SUCH EQUIPMENT. EQUIPMENT MAINTENANCE AREAS WILL BE LOCATED AWAY FROM STATE WATER, NATURAL DRAINS AND STORM WATER DRAINAGE INLETS. IN ADDITION, TEMPORARY FUELING TANKS SHALL HAVE A SECONDARY CONTAINMENT LINER TO PREVENT/MINIMIZE SITE CONTAMINATION. DISCHARGE OF OILS, FUELS AND LUBRICANTS IS PROHIBITED. PROPER DISPOSAL METHODS WILL INCLUDE COLLECTION IN A SUITABLE CONTAINER AND DISPOSAL AS REQUIRED BY LOCAL AND STATE REGULATIONS.
 - SOLVENTS- ALL PRODUCTS WILL BE STORED IN TIGHTLY SEALED ORIGINAL CONTAINERS WHEN NOT IN USE. EXCESS PRODUCT WILL NOT BE DISCHARGED TO THE STORM WATER COLLECTION SYSTEM. EXCESS PRODUCT, MATERIALS USED WITH THESE PRODUCTS AND PRODUCT CONTAINERS WILL BE DISPOSED OF ACCORDING TO MANUFACTURER'S SPECIFICATIONS AND RECOMMENDATIONS.
 - CONCRETE TRUCK WASHING- WASHOUT OF CONCRETE DRUMS AT THE CONSTRUCTION SITE IS PROHIBITED. CONTRACTOR IS TO SELECT LOCATIONS ON THE SITE FOR CONCRETE WASH DOWN THAT MEET THE CONDITIONS OF THE 404 PERMIT AND NPDES STAND ALONE PERMIT. CONCRETE WASH DOWN AREA SHOULD BE OUTSIDE OF THE AREA THAT IS MARKED FOR EXCAVATION AND CAN BE LEFT BEHIND FOLLOWING CONSTRUCTION. CONTRACTOR SHALL SELECT AN EPA RECOMMENDED WASHOUT BMP TO BE USED AND SUBMIT LOCATIONS AND WASH OUT BMP TYPE FOR ENGINEER'S APPROVAL.
 - FERTILIZER/HERBICIDES- THESE PRODUCTS WILL BE APPLIED AT RATES THAT DO NOT EXCEED THE MANUFACTURER'S SPECIFICATIONS OR ABOVE THE GUIDELINES SET FORTH IN THE CROP ESTABLISHMENT OR IN THE GSWCC MANUAL FOR EROSION AND SEDIMENT CONTROL IN GEORGIA. ANY STORAGE OF THESE MATERIALS WILL BE UNDER ROOF IN SEALED CONTAINERS.
 - CONSTRUCTION MATERIALS- NO CONSTRUCTION MATERIALS WILL BE BURIED OR DISPOSED OF ON-SITE. ALL SUCH MATERIAL WILL BE DISPOSED OF ACCORDING TO APPLICABLE STATE AND LOCAL REGULATIONS.
- SOIL CLEANUP AND CONTROL PRACTICES
 - LOCAL, STATE AND MANUFACTURER'S RECOMMENDED METHODS FOR SPILL CLEANUP WILL BE CLEARLY POSTED AND PROCEDURES MADE AVAILABLE TO SITE PERSONNEL.
 - MATERIAL AND EQUIPMENT NECESSARY FOR SPILL CLEANUP WILL BE KEPT IN THE MATERIAL STORAGE AREAS. TYPICAL MATERIALS AND EQUIPMENT INCLUDES, BUT IS NOT LIMITED TO: BROOMS, DUSTPANS, MOPS, RAGS, GLOVES, GOGGLES, CAT LITTER, SAND, SAWDUST AND PROPERTY LABELED PLASTIC AND METAL WASTE CONTAINERS.
 - SPILL PREVENTION PRACTICES AND PROCEDURES WILL BE REVIEWED AFTER A SPILL AND ADJUSTED AS NECESSARY TO PREVENT FUTURE SPILLS.
 - ALL SPILLS WILL BE CLEANED UP IMMEDIATELY UPON DISCOVERY. ALL SPILLS WILL BE REPORTED AS REQUIRED BY LOCAL, STATE AND FEDERAL REGULATIONS.
- FOR SPILLS THAT IMPACT SURFACE WATER (LEAVE A SHEEN ON SURFACE WATER), THE NATIONAL RESPONSE CENTER (NRC) WILL BE CONTACTED WITHIN 24 HOURS AT 1-800-424-8802.
- FOR SPILLS OF AN UNKNOWN AMOUNT, THE NATIONAL RESPONSE CENTER (NRC) WILL BE CONTACTED WITHIN 24 HOURS A 1-800-424-8802.
- FOR SPILLS GREATER THAN 25 GALLONS AND NO SURFACE WATER IMPACTS, THE GEORGIA EPD WILL BE CONTACTED WITHIN 24 HOURS.

- FOR SPILLS LESS THAN 25 GALLONS AND NO SURFACE WATER IMPACTS, THE SPILL WILL BE CLEANED UP AND LOCAL AGENCIES WILL BE CONTACTED AS REQUIRED.
- THE CONTRACTOR SHALL NOTIFY THE ENGINEER OF RECORD WHO PREPARED THIS PLAN IF MORE THAN 1320 GALLONS OF PETROLEUM IS STORED ON-SITE (THIS INCLUDES CAPACITIES OF EQUIPMENT) OR IF ANY ONE PIECE OF EQUIPMENT HAS A CAPACITY GREATER THAN 660 GALLONS. THE CONTRACTOR WILL NEED A SPILL PREVENTION CONTAINMENT AND COUNTERMEASURES PLAN PREPARED BY A LICENSED PROFESSIONAL.
- SANITARY UNIT WILL BE ON-SITE TO COLLECT ALL SANITARY WASTE DURING CONSTRUCTION ACTIVITY.

404 PERMIT CONDITION NOTES

- EQUIPMENT STAGING AND MAINTENANCE AREAS ARE PROHIBITED WITHIN 200 FEET OF STREAMS, OR WITHIN 50 FEET OF WETLANDS OR OPEN WATERS, TO MINIMIZE THE POTENTIAL FOR WASH WATER, PETROLEUM PRODUCTS, OR OTHER CONTAMINANTS FROM CONSTRUCTION EQUIPMENT ENTERING WATERS OF THE U.S.
- UNCURED WASTE CONCRETE, CONSTRUCTION DEBRIS, DEMOLITION DEBRIS OR OTHER WASTE MATERIALS SHALL NOT BE DISCHARGED INTO WATERS OF THE U.S. WASTE MATERIAL SHALL NOT BE DISPOSED OF OR STORED WITHIN 200 FEET OF STREAMS, OR WITHIN 50 FEET OF WETLANDS OR OPEN WATERS, TO MINIMIZE THE POTENTIAL FOR SUCH MATERIALS FROM ENTERING WATERS OF THE U.S.
- ANY DISCHARGE OF UNCURED CONCRETE INTO THE WATERS OF THE U.S. DURING CONSTRUCTION OF THE DAM OR INTAKE STRUCTURE SHALL BE CONTAINED WITHIN WATERPROOF FORMS UNTIL CURED.
- ONCE THE PROJECT SITE IS SUFFICIENTLY STABILIZED THROUGH RE-VEGETATION, THE PERMITEE SHALL REMOVE ALL SILT FENCING AND OTHER NON-BIODEGRADABLE EROSION CONTROL MEASURES FROM STREAM BANKS, RIPARIAN AREAS, WETLANDS AND UPLAND AREAS IMMEDIATELY ADJACENT TO OTHER WATERS OF THE U.S. WITHIN 30 DAYS OF COMPLETION OF THIS ACTION, THE PERMITEE SHALL NOTIFY THE CORPS IN WRITING.
- NO OILS, GREASE, MATERIALS OR OTHER POLLUTANTS WILL BE DISCHARGED FROM THE CONSTRUCTION ACTIVITIES WHICH REACH PUBLIC WATERS.
- WASTE MATERIALS SHALL NOT BE DISCHARGED TO WATERS OF THE STATE, EXCEPT AS AUTHORIZED BY A SECTION 404 PERMIT.

CITY OF ATLANTA EROSION CONTROL NOTES

- PRIOR TO LAND-DISTURBING ACTIVITIES, THE CONTRACTOR SHALL SCHEDULE A PRE-CONSTRUCTION MEETING WITH THE AREA EROSION CONTROL INSPECTOR. CALL (404) 546-1300 TO CONTACT THE INSPECTOR.
- THE ESCAPE OF SEDIMENT FROM THE SITE SHALL BE PREVENTED BY THE INSTALLATION OF EROSION AND SEDIMENT CONTROL MEASURES AND PRACTICES PRIOR TO, OR CONCURRENT WITH, LAND DISTURBING ACTIVITIES.
- EROSION CONTROL MEASURES WILL BE MAINTAINED AT ALL TIMES. IF FULL IMPLEMENTATION OF THE APPROVED PLAN DOES NOT PROVIDE FOR EFFECTIVE EROSION CONTROL, ADDITIONAL EROSION AND SEDIMENT CONTROL MEASURES SHALL BE IMPLEMENTED TO CONTROL OR TREAT THE SEDIMENT SOURCE.
- ANY DISTURBED AREA LEFT EXPOSED FOR A PERIOD GREATER THAN 14 DAYS SHALL BE STABILIZED WITH MULCH AND TEMPORARY SEEDING.
- ANY DISTURBED AREAS REMAINING IDLE FOR 30 DAYS SHALL BE STABILIZED WITH PERMANENT VEGETATION.
- EROSION AND SEDIMENT CONTROL MEASURES SHALL BE INSPECTED AT LEAST WEEKLY, AFTER EACH RAIN, AND REPAIRED AS NECESSARY.
- ADDITIONAL EROSION AND SEDIMENT CONTROL MEASURES SHALL BE INSTALLED IF DETERMINED NECESSARY BY ON-SITE INSPECTION.
- SILT FENCE SHALL MEET THE REQUIREMENTS OF SECTION 171 - TYPE C TEMPORARY SILT FENCE, OF THE GEORGIA DEPARTMENT OF TRANSPORTATION STANDARD SPECIFICATIONS, 1993 EDITION, AND BE WIRE REINFORCED.
- CITY OF ATLANTA, THE PROPERTY OWNER, AND CONTRACTOR ARE EQUALLY RESPONSIBLE FOR ALL EROSION CONTROL ACTIVITIES.
- IT IS THE RESPONSIBILITY OF THE CONTRACTOR TO OBTAIN QUALIFIED PROFESSIONAL ADVICE WHEN QUESTIONS ARISE CONCERNING DESIGN AND EFFECTIVENESS OF EROSION CONTROL DEVICES, NOT THE CITY OF ATLANTA.
- ALL TEMPORARY AND PERMANENT SEEDING MUST BE PERFORMED AT THE APPROPRIATE SEASON. IN SUCH INSTANCES WHERE THE ESTABLISHMENT OF VEGETATION IS INOPPORTUNE DUE TO SEASON OR DROUGHT, DISTURBED AREAS SHALL BE TEMPORARILY STABILIZED USING 2"-4" OF MULCH (DS1). ADDITIONAL PLANTINGS WILL BE NECESSARY IF A SUFFICIENT STAND OF GRASS FAILS TO GROW.
- THE CITY'S DESIGNEE WILL VERIFY ADEQUATE COVER (100% COVER, 70% DENSITY) OF PERMANENT STABILIZATION (DS3, DS4).
- SILT FENCES SHALL NOT BE PLACED IN STREAM BUFFER OR FLOODPLAINS, UNLESS UTILIZED FOR THE CONSTRUCTION OF AN EXEMPT ACTIVITY (I.E. ROADWAY DRAINAGE STRUCTURES, SEWER/WATER CROSSINGS, OR DRAINAGE STRUCTURES) PER THE APPROVED PLANS. FOR SUCH DISTURBANCES WITHIN THE BUFFER, THE AREA SHALL BE IMMEDIATELY STABILIZED USING EROSION CONTROL MATTING AND/OR BLANKETS ONCE THE ACTIVITY IS COMPLETE.
- FOR EACH SITE ON WHICH LAND DISTURBING ACTIVITY OCCURS, EACH ENTITY OR PERSON ACTING AS EITHER A PRIMARY, SECONDARY, OR TERTIARY PERMITEE, AS DEFINED IN THE STATE GENERAL PERMIT, SHALL HAVE AS A MINIMUM ONE PERSON WHO IS IN RESPONSIBLE CHARGE OF EROSION AND SEDIMENTATION CONTROL ACTIVITIES ON BEHALF OF SAID ENTITY OR PERSON AND MEETS THE APPLICABLE (LEVEL 1A) EDUCATION OR TRAINING CERTIFICATION REQUIREMENTS (O.C.G.A. 12-7-19(A)(2)).
- SUBCONTRACTORS INVOLVED WITH LAND DISTURBANCE ACTIVITIES SHALL MEET THE EDUCATION REQUIREMENTS (LEVEL 1) DESCRIBED IN O.C.G.A. 12-7-19.

SITE SOILS

THE LIMIT OF DISTURBANCE INCLUDES THE FOLLOWING SOIL TYPES AS IDENTIFIED IN THE NRCS WEB SOIL SURVEY:
Ud: URBAN LAND

ITEM	MONTH															
	1	2	3	4	5	6	7	8	9	10	11	12	13	14	15	16
INSTALL AND MAINTAIN EROSION CONTROL																
CLEARING AND GRUBBING																
EARTHWORK, GRADING AND SITE CONSTRUCTION																
VEGETATION AND MULCHING																
PERMANENT GRASSING AND GROUND COVER																



Know what's below. Call before you dig.

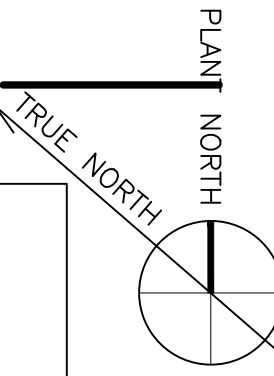
COPYRIGHT: ARCADIS U.S., INC. 2022				
IF THIS BAR IS NOT INDICATED SCALE IS INCORRECT				
	1	SEP 2022	REVISED LOD	HG
	0	JUL 2022	CONFORMED FOR CONSTRUCTION	HG
	NO.	DATE	ISSUED FOR	BY

SEALS	
	GSWCC No. 0000044976. EXPIRES 10/02/2022.

A Joint Venture
 2839 Paces Ferry Road
 Suite 900
 Atlanta, GA 30339
 Tel: 770-431-8666
 Fax: 770-435-2666
 www.arcadis-us.com

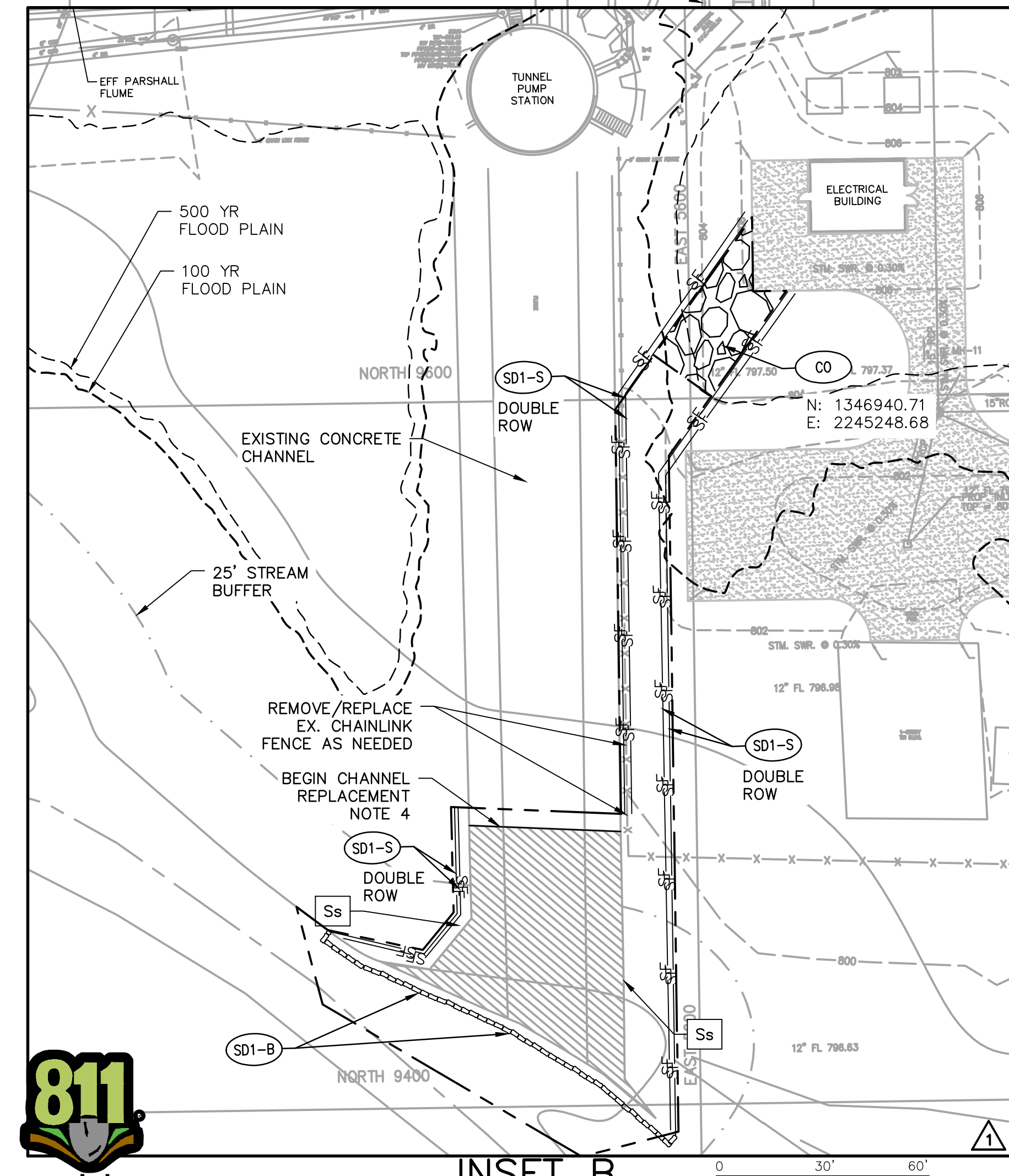
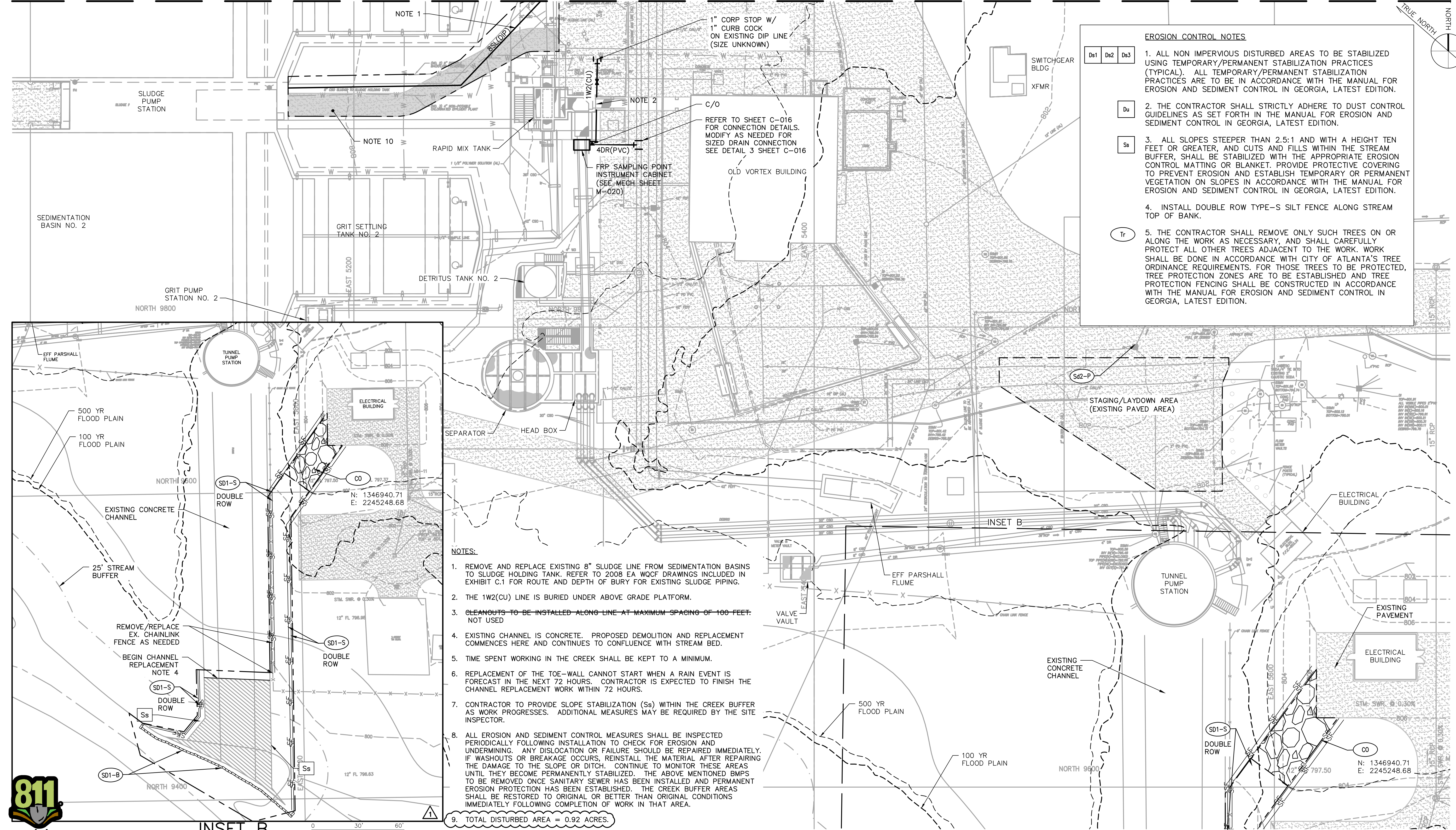
ATLANTA, GEORGIA
CITY OF ATLANTA
DEPARTMENT OF WATERSHED MANAGEMENT
EAST AREA WATER QUALITY CONTROL FACILITY IMPROVEMENTS
 W.01.02.0085

SHEET TITLE	EROSION AND SEDIMENTATION CONTROL LEGEND AND NOTES
DATE:	SEPTEMBER 2022
PROJECT NO.:	GABPA134
DESIGNED BY:	A. JACOBS/DAW
DRAWN BY:	J. BROWN/ADC
CHECKED BY:	A. SHARP/DAW
SCALE:	NONE
	C-008
	SHEET 13 OF 150



EROSION CONTROL NOTES

- Ds1 Ds2 Ds3** 1. ALL NON IMPERVIOUS DISTURBED AREAS TO BE STABILIZED USING TEMPORARY/PERMANENT STABILIZATION PRACTICES (TYPICAL). ALL TEMPORARY/PERMANENT STABILIZATION PRACTICES ARE TO BE IN ACCORDANCE WITH THE MANUAL FOR EROSION AND SEDIMENT CONTROL IN GEORGIA, LATEST EDITION.
- Du** 2. THE CONTRACTOR SHALL STRICTLY ADHERE TO DUST CONTROL GUIDELINES AS SET FORTH IN THE MANUAL FOR EROSION AND SEDIMENT CONTROL IN GEORGIA, LATEST EDITION.
- Ss** 3. ALL SLOPES STEEPER THAN 2.5:1 AND WITH A HEIGHT TEN FEET OR GREATER, AND CUTS AND FILLS WITHIN THE STREAM BUFFER, SHALL BE STABILIZED WITH THE APPROPRIATE EROSION CONTROL MATTING OR BLANKET. PROVIDE PROTECTIVE COVERING TO PREVENT EROSION AND ESTABLISH TEMPORARY OR PERMANENT VEGETATION ON SLOPES IN ACCORDANCE WITH THE MANUAL FOR EROSION AND SEDIMENT CONTROL IN GEORGIA, LATEST EDITION.
- 4. INSTALL DOUBLE ROW TYPE-S SILT FENCE ALONG STREAM TOP OF BANK.
- Tr** 5. THE CONTRACTOR SHALL REMOVE ONLY SUCH TREES ON OR ALONG THE WORK AS NECESSARY, AND SHALL CAREFULLY PROTECT ALL OTHER TREES ADJACENT TO THE WORK. WORK SHALL BE DONE IN ACCORDANCE WITH CITY OF ATLANTA'S TREE ORDINANCE REQUIREMENTS. FOR THOSE TREES TO BE PROTECTED, TREE PROTECTION ZONES ARE TO BE ESTABLISHED AND TREE PROTECTION FENCING SHALL BE CONSTRUCTED IN ACCORDANCE WITH THE MANUAL FOR EROSION AND SEDIMENT CONTROL IN GEORGIA, LATEST EDITION.



- NOTES:**
1. REMOVE AND REPLACE EXISTING 8" SLUDGE LINE FROM SEDIMENTATION BASINS TO SLUDGE HOLDING TANK. REFER TO 2008 EA WQCF DRAWINGS INCLUDED IN EXHIBIT C.1 FOR ROUTE AND DEPTH OF BURY FOR EXISTING SLUDGE PIPING.
 2. THE 1W2(CU) LINE IS BURIED UNDER ABOVE GRADE PLATFORM.
 3. CLEANOUTS TO BE INSTALLED ALONG LINE AT MAXIMUM SPACING OF 100 FEET. NOT USED
 4. EXISTING CHANNEL IS CONCRETE. PROPOSED DEMOLITION AND REPLACEMENT COMMENCES HERE AND CONTINUES TO CONFLUENCE WITH STREAM BED.
 5. TIME SPENT WORKING IN THE CREEK SHALL BE KEPT TO A MINIMUM.
 6. REPLACEMENT OF THE TOE-WALL CANNOT START WHEN A RAIN EVENT IS FORECAST IN THE NEXT 72 HOURS. CONTRACTOR IS EXPECTED TO FINISH THE CHANNEL REPLACEMENT WORK WITHIN 72 HOURS.
 7. CONTRACTOR TO PROVIDE SLOPE STABILIZATION (Ss) WITHIN THE CREEK BUFFER AS WORK PROGRESSES. ADDITIONAL MEASURES MAY BE REQUIRED BY THE SITE INSPECTOR.
 8. ALL EROSION AND SEDIMENT CONTROL MEASURES SHALL BE INSPECTED PERIODICALLY FOLLOWING INSTALLATION TO CHECK FOR EROSION AND UNDERMINING. ANY DISLOCATION OR FAILURE SHOULD BE REPAIRED IMMEDIATELY. IF WASHOUTS OR BREAKAGE OCCURS, REINSTALL THE MATERIAL AFTER REPAIRING THE DAMAGE TO THE SLOPE OR DITCH. CONTINUE TO MONITOR THESE AREAS UNTIL THEY BECOME PERMANENTLY STABILIZED. THE ABOVE MENTIONED BMPs TO BE REMOVED ONCE SANITARY SEWER HAS BEEN INSTALLED AND PERMANENT EROSION PROTECTION HAS BEEN ESTABLISHED. THE CREEK BUFFER AREAS SHALL BE RESTORED TO ORIGINAL OR BETTER THAN ORIGINAL CONDITIONS IMMEDIATELY FOLLOWING COMPLETION OF WORK IN THAT AREA.
 9. TOTAL DISTURBED AREA = 0.92 ACRES.
 10. REPLACE APPROXIMATELY 139 SQUARE YARDS OF ASPHALT PAVEMENT. SEE DETAIL 6 ON SHEET C-017.



INSET B

SCALE: 1" = 30'

COPYRIGHT: ARCADIS U.S., INC. 2022			
IF THIS BAR IS NOT INDICATED SCALE IS INCORRECT			
NO.	DATE	ISSUED FOR	BY
1	SEP 2022	REVISED LOD	HG
0	JUL 2022	CONFORMED FOR CONSTRUCTION	HG

SEALS

ANDREW WILCOX
REGISTERED PROFESSIONAL ENGINEER
No. 031826
STATE OF GEORGIA

GSWCC NO. 0000044976. EXPIRES 10/02/2022.

ARCADIS BPA
A Joint Venture

2839 Paces Ferry Road
Suite 900
Atlanta, GA 30339
Tel: 770-431-8666
Fax: 770-435-2666
www.arcadis-us.com

RESURGENS
ENVIRONMENTAL SERVICES

ATLANTA, GEORGIA
CITY OF ATLANTA
DEPARTMENT OF WATERSHED MANAGEMENT

EAST AREA WATER QUALITY CONTROL FACILITY IMPROVEMENTS

W.01.02.0085

SHEET TITLE

**OUTSIDE PIPING,
GRADING, DRAINAGE
AND EROSION CONTROL
PLAN 1**

DATE:	SEPTEMBER 2022	SCALE: 1" = 20'
PROJECT NO.:	GABPA134	C-009
DESIGNED BY:	W. HACKETT/DAW	
DRAWN BY:	J. BROWN/ADC	
CHECKED BY:	A. SHARP/DAW	SHEET 14 OF 150

User: ACRAIN_Spec: AUS-NCSMOD File: \\ARCADIS-US-COM\OFFICE\DATA\ATLANTA-GA\GAD\DATA\AUTOCAD\PROJECTS\GABPA134 - GSD GROUP 1\BID PACKAGE 2\XSHEETS\CVL\VC-009.DWG Scale: 1:1 Saved Date: 9/7/2022 Time: 09:53 Plot Date: 9/9/2022 11:15 Layout: 14

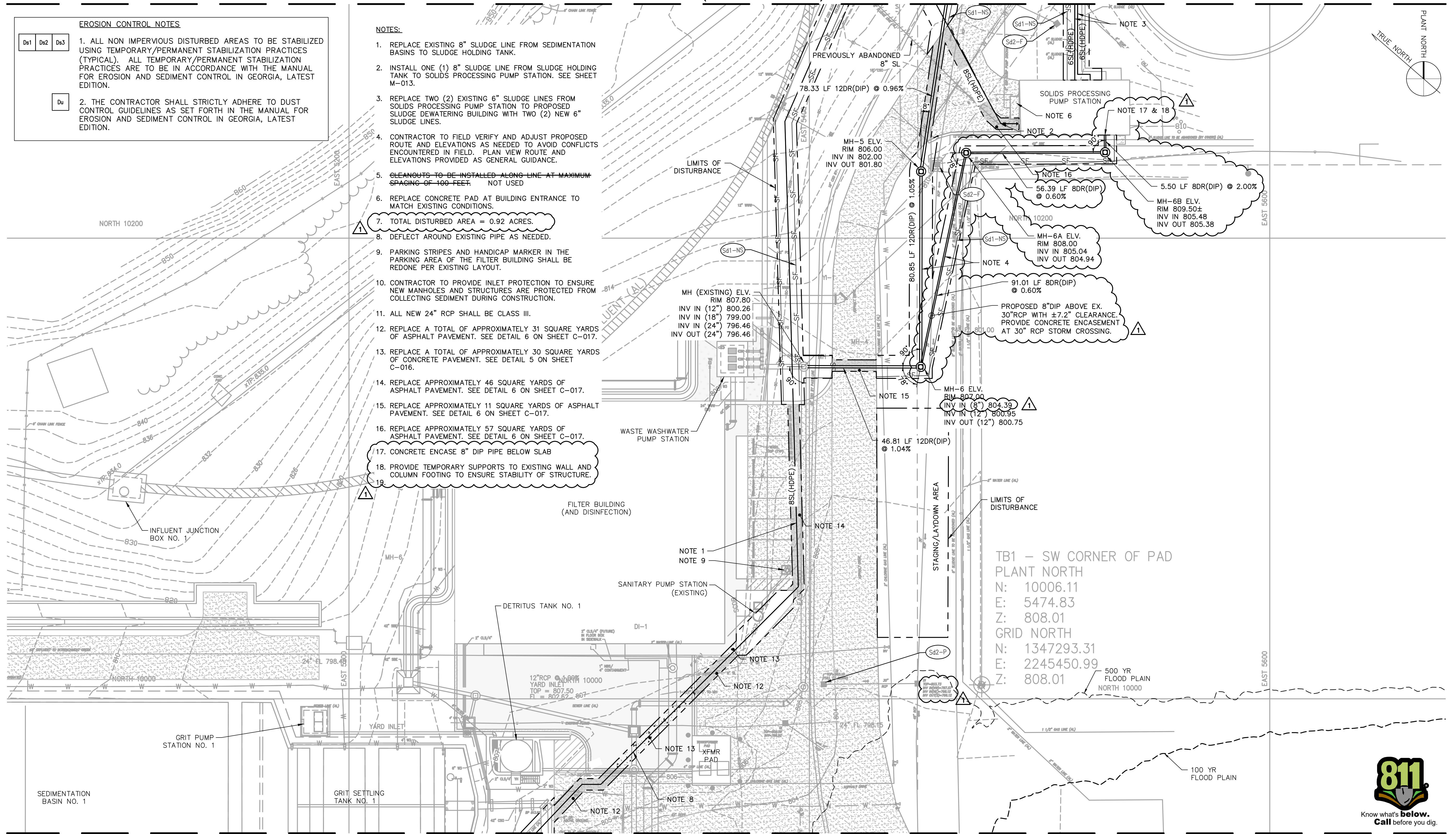
MATCHLINE (SEE SHEET C-011)

EROSION CONTROL NOTES

- | | | |
|-----|-----|-----|
| Ds1 | Ds2 | Ds3 |
|-----|-----|-----|
- ALL NON IMPERVIOUS DISTURBED AREAS TO BE STABILIZED USING TEMPORARY/PERMANENT STABILIZATION PRACTICES (TYPICAL). ALL TEMPORARY/PERMANENT STABILIZATION PRACTICES ARE TO BE IN ACCORDANCE WITH THE MANUAL FOR EROSION AND SEDIMENT CONTROL IN GEORGIA, LATEST EDITION.
 - THE CONTRACTOR SHALL STRICTLY ADHERE TO DUST CONTROL GUIDELINES AS SET FORTH IN THE MANUAL FOR EROSION AND SEDIMENT CONTROL IN GEORGIA, LATEST EDITION.

NOTES:

- REPLACE EXISTING 8" SLUDGE LINE FROM SEDIMENTATION BASINS TO SLUDGE HOLDING TANK.
- INSTALL ONE (1) 8" SLUDGE LINE FROM SLUDGE HOLDING TANK TO SOLIDS PROCESSING PUMP STATION. SEE SHEET M-013.
- REPLACE TWO (2) EXISTING 6" SLUDGE LINES FROM SOLIDS PROCESSING PUMP STATION TO PROPOSED SLUDGE DEWATERING BUILDING WITH TWO (2) NEW 6" SLUDGE LINES.
- CONTRACTOR TO FIELD VERIFY AND ADJUST PROPOSED ROUTE AND ELEVATIONS AS NEEDED TO AVOID CONFLICTS ENCOUNTERED IN FIELD. PLAN VIEW ROUTE AND ELEVATIONS PROVIDED AS GENERAL GUIDANCE.
- CLEANOUTS TO BE INSTALLED ALONG LINE AT MAXIMUM SPACING OF 100 FEET. NOT USED
- REPLACE CONCRETE PAD AT BUILDING ENTRANCE TO MATCH EXISTING CONDITIONS.
- TOTAL DISTURBED AREA = 0.92 ACRES.
- DEFLECT AROUND EXISTING PIPE AS NEEDED.
- PARKING STRIPES AND HANDICAP MARKER IN THE PARKING AREA OF THE FILTER BUILDING SHALL BE REDONE PER EXISTING LAYOUT.
- CONTRACTOR TO PROVIDE INLET PROTECTION TO ENSURE NEW MANHOLES AND STRUCTURES ARE PROTECTED FROM COLLECTING SEDIMENT DURING CONSTRUCTION.
- ALL NEW 24" RCP SHALL BE CLASS III.
- REPLACE A TOTAL OF APPROXIMATELY 31 SQUARE YARDS OF ASPHALT PAVEMENT. SEE DETAIL 6 ON SHEET C-017.
- REPLACE A TOTAL OF APPROXIMATELY 30 SQUARE YARDS OF CONCRETE PAVEMENT. SEE DETAIL 5 ON SHEET C-016.
- REPLACE APPROXIMATELY 46 SQUARE YARDS OF ASPHALT PAVEMENT. SEE DETAIL 6 ON SHEET C-017.
- REPLACE APPROXIMATELY 11 SQUARE YARDS OF ASPHALT PAVEMENT. SEE DETAIL 6 ON SHEET C-017.
- REPLACE APPROXIMATELY 57 SQUARE YARDS OF ASPHALT PAVEMENT. SEE DETAIL 6 ON SHEET C-017.
- CONCRETE ENCASE 8" DIP PIPE BELOW SLAB
- PROVIDE TEMPORARY SUPPORTS TO EXISTING WALL AND COLUMN FOOTING TO ENSURE STABILITY OF STRUCTURE.



MATCHLINE (SEE SHEET C-009)



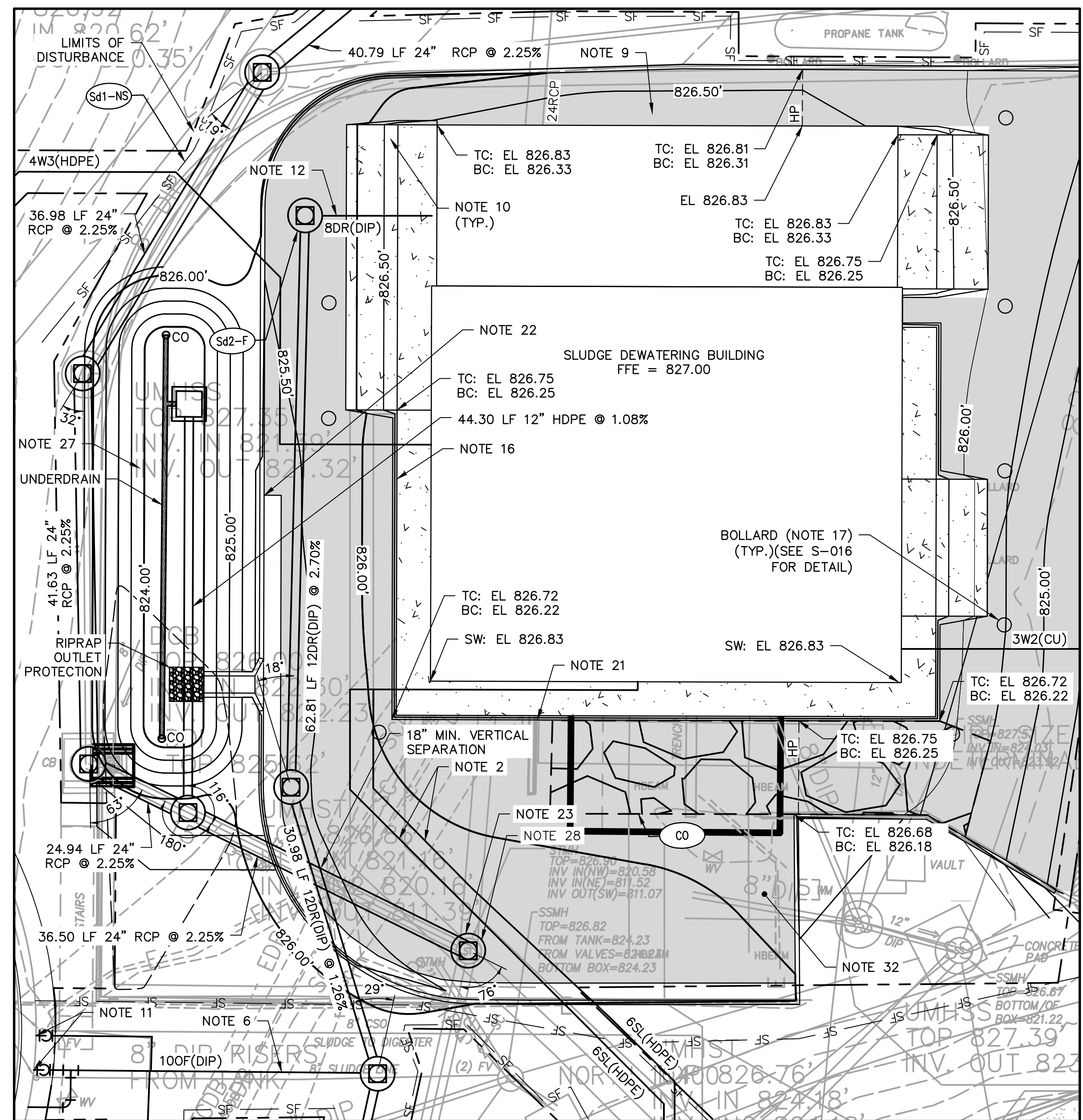
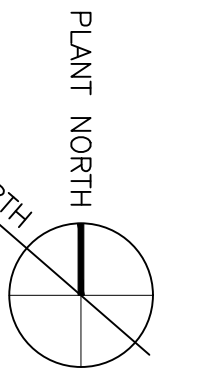
0 10' 20' 40'

COPYRIGHT: ARCADIS U.S., INC. 2022		SEALS:				ATLANTA, GEORGIA CITY OF ATLANTA DEPARTMENT OF WATERSHED MANAGEMENT EAST AREA WATER QUALITY CONTROL FACILITY IMPROVEMENTS W.01.02.0085		SHEET TITLE: OUTSIDE PIPING, GRADING, DRAINAGE AND EROSION CONTROL PLAN 2		DATE: SEPTEMBER 2022 PROJECT NO.: GABPA134 DESIGNED BY: W. HACKETT/DAW DRAWN BY: J. BROWN/ADC CHECKED BY: A. SHARP/DAW		SCALE: 1" = 20' C-010 SHEET 15 OF 150	
NO.	DATE	ISSUED FOR	BY	GSWCC NO. 0000044976. EXPIRES 10/02/2022.									
1	SEP 2022	REVISED LOD, ADDED 8" DIP FOR TRENCH DRAIN	HG										
0	JUL 2022	CONFORMED FOR CONSTRUCTION	HG										

User: ACPAIN; Spc: AUS-NCSMOD; File: \\ARCADIS-US-COM\OFFICE\DATA\ATLANTA-GA\GAD\DATA\AUTOCAD\ACAD\PROJ\GABPA134 - GSO GROUP 1\BID PACKAGE 2\XSHEETS\CIVIL\C-010.DWG; Scale: 1:1; Saved Date: 9/9/2022; Time: 11:00; Plot Date: Crain, Angelle; 9/9/2022; 11:13; Layout: 15

NOTES:

- REPLACE EXISTING 8" SLUDGE LINE FROM SEDIMENTATION BASINS TO SLUDGE HOLDING TANK.
- REPLACE TWO (2) EXISTING SLUDGE LINES CONNECTING PROPOSED SLUDGE DEWATERING BUILDING TO EXISTING SOLIDS PROCESSING PUMP STATION WITH TWO (2) NEW 6" SLUDGE LINES.
- DEMOLISH AND FILL EXISTING VALVE AND METER VAULTS (SIZES UNKNOWN) LOCATED BENEATH SLUDGE DEWATERING BUILDING FOOTPRINT.
- EXTEND 3" W2 LINE OFF EXISTING CITY W2 SYSTEM TO NEW SLUDGE DEWATERING BUILDING. CONTRACTOR TO FIELD VERIFY CONNECTION AND ASSOCIATED ROUTING.
- INSTALL ONE (1) 8" SLUDGE LINE FROM SLUDGE HOLDING TANK TO SOLIDS PROCESSING PUMP STATION. SEE SHEET M-013.
- REPLACE EXISTING SLUDGE HOLDING TANK OVERFLOW LINE TO PROPOSED MANHOLE.
- CONTRACTOR TO FIELD VERIFY AND ADJUST PROPOSED PIPE ROUTE AS NEEDED TO AVOID CONFLICTS ENCOUNTERED IN FIELD. PLAN VIEW ROUTE AND ELEVATION PROVIDED AS GENERAL GUIDANCE.
- CLEANOUTS TO BE INSTALLED ALONG LINE AT MAXIMUM SPACING OF 100 FEET. NOT USED.
- RESTORE ANY DISTURBED EXISTING CURB AND GUTTER, CATCH BASIN, MANHOLE COVERS AND ASPHALT ADJACENT TO PROPOSED SLUDGE DEWATERING BUILDING TO MATCH EXISTING CONDITIONS. (SEE CIVIL DETAILS.)
- CONCRETE APRONS SHALL BE INSTALLED AT DESIGNATED LOCATIONS. APRONS SHALL BE SLOPED FROM ASPHALT TO MEET FFE/SLAB ELEVATION AT EACH ROLL-UP DOOR ELEVATION (SEE CIVIL DETAILS).
- REFER TO M-010 AND M-011 FOR CONNECTIONS TO EXISTING SLUDGE TANK.
- INSTALL 8" CHECKMATE INLINE CHECK VALVE OR EQUAL AT THIS LOCATION IMMEDIATELY UPSTREAM OF MANHOLE.
- CONTRACTOR TO REPLACE ALL PAVEMENT WITHIN THE DISTURBED AREA AROUND THE SLUDGE DEWATERING BUILDING PLUS MILL AND OVERLAY THE STAGING/LAYDOWN AREA. SEE CIVIL DETAILS FOR PAVEMENT DETAIL.
- CONTRACTOR TO REPLACE ALL PAVED AREAS DAMAGED DURING CONSTRUCTION. REPLACEMENT TO CONSIST OF PAVEMENT MILL AND OVERLAY.
- CONTRACTOR TO REPAIR ANY CURB AND GUTTER DISTURBED DURING CONSTRUCTION. SEE CIVIL DETAILS.
- TOP OF SIDEWALK ELEVATION FOR SLUDGE DEWATERING BUILDING IS 826.80 FT. (TYP.) AND SLOPES AWAY FROM BUILDING TO ASPHALT. TIE INTO PROPOSED GRADING.
- BOLLARDS (7) TO BE FIELD LOCATED AND VERIFIED BY CONTRACTOR PRIOR TO CONSTRUCTION.
- TOTAL DISTURBED AREA = 0.92 ACRES. **A**
- CONTRACTOR TO CONFIRM THIS LINE AS STORM, SANITARY OR COMBINED WITH FACILITY STAFF.
- SET STORMWATER MANHOLE TOP 2 FT (MIN) ABOVE PROPOSED GRADE.
- CONSTRUCT HEADER CURB ALONG CONCRETE SIDEWALK.
- END CURB AND GUTTER. BEGIN HEADER CURB.
- ADJUST STORMWATER MANHOLE TOP AS NEEDED TO MATCH PROPOSED GRADE.
- LOCATION AND ELEVATIONS OF EXISTING SITE FEATURES, UTILITIES AND WORK ARE BASED ON THE BEST AVAILABLE INFORMATION INCLUDING TOPOGRAPHIC SURVEY AND RECORD DRAWINGS. EXACT LOCATION AND COMPLETENESS IS NOT GUARANTEED. PRIOR TO CONSTRUCTION, IT SHALL BE THE CONTRACTOR'S RESPONSIBILITY TO PERFORM A UTILITY LOCATE AND FIELD SURVEY TO CONFIRM EXISTING GRADE ELEVATIONS AND DEPTHS AND LOCATIONS OF ALL STRUCTURES, UTILITIES, AND LINENWORK LOCATED WITHIN THE LIMITS OF DISTURBANCE. THE FIELD SURVEY AND UTILITY LOCATE SHALL BE APPROVED BY THE ENGINEER PRIOR TO CONSTRUCTION.
- REFER TO LARGE DIAMETER MANHOLE BASE STANDARD DETAIL FOR CONSTRUCTION OF STORMWATER MANHOLES. 3,000 PSI CONCRETE FILL AROUND PIPE WITHIN MANHOLE AS SHOWN ON DETAIL IS NOT REQUIRED.
- ADJUST SANITARY SEWER MANHOLE RIM ELEVATIONS AS NEEDED TO MATCH PROPOSED GRADE IN PAVED AREAS.
- FILLING OF THE BIORETENTION POND WITH THE PERMEABLE SOIL MATERIAL, MULCH, AND LANDSCAPING OF THE BMP SHOULD NOT OCCUR UNTIL THE FINAL PHASE OF CONSTRUCTION AFTER THE PROPOSED BUILDING AND UTILITIES ARE CONSTRUCTED AND FINAL GRADING FOR THE SITE (EXCEPT WHERE THE BIORETENTION AREA WILL BE CONSTRUCTED) HAS BEEN COMPLETED. ONCE THE SITE IS STABILIZED WITH VEGETATION AND IMPERVIOUS SURFACE COVER, THE SEDIMENT SHALL BE REMOVED FROM THE POND AND FINAL CONSTRUCTION OF THE POND COMPLETED.
- SEAL EXISTING 24" RCP INTO EX. MANHOLE. PROVIDE CORE AND BOOT FOR NEW 24" RCP INTO MANHOLE.
- ABANDON IN PLACE EXISTING 24" RCP UNDER BUILDING TO EXISTING STMH. SEE SHEET C-001 OUTSIDE PIPING NOTE NO. 1
- CONTRACTOR TO PROVIDE INLET PROTECTION TO ENSURE NEW MANHOLES AND STRUCTURES ARE PROTECTED FROM COLLECTING SEDIMENT DURING CONSTRUCTION.



INSET C

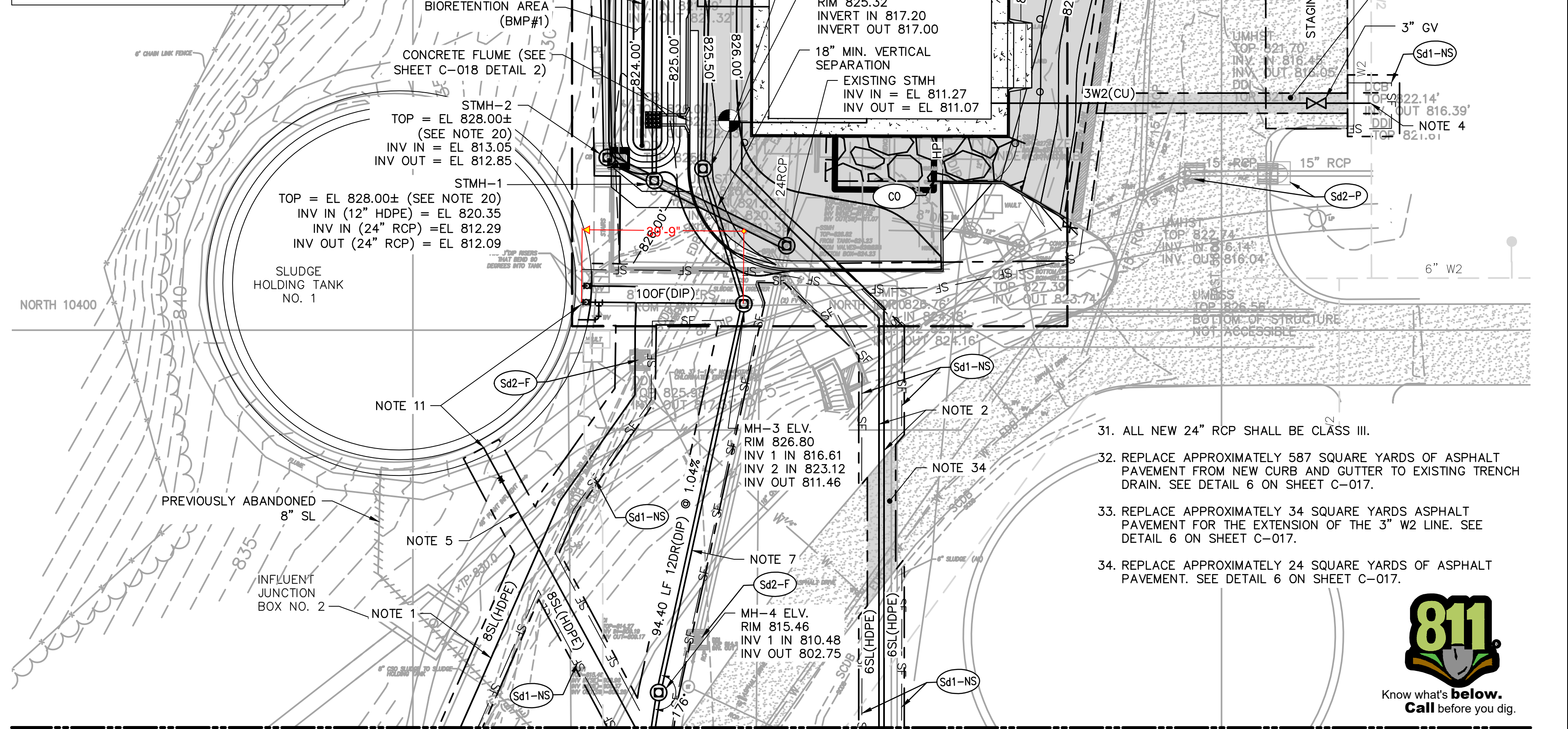
SCALE: 1" = 10'

EROSION CONTROL NOTES

Ds1	Ds2	Ds3
-----	-----	-----

- ALL NON IMPERVIOUS DISTURBED AREAS TO BE STABILIZED USING TEMPORARY/PERMANENT STABILIZATION PRACTICES (TYPICAL). ALL TEMPORARY/PERMANENT STABILIZATION PRACTICES ARE TO BE IN ACCORDANCE WITH THE MANUAL FOR EROSION AND SEDIMENT CONTROL IN GEORGIA, LATEST EDITION AND APPROVED BY ENGINEER.
- THE CONTRACTOR SHALL STRICTLY ADHERE TO DUST CONTROL GUIDELINES AS SET FORTH IN THE MANUAL FOR EROSION AND SEDIMENT CONTROL IN GEORGIA, LATEST EDITION.

Du

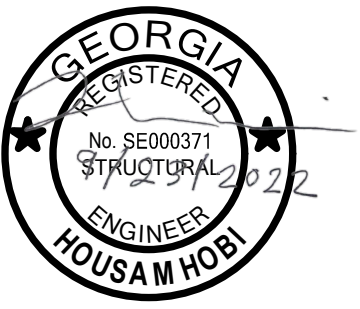


MATCHLINE (SEE SHEET C-010)



COPYRIGHT: ARCADIS U.S., INC. 2022	2 SEP 2022 REVISED LOD HG		SEALS 		2839 Paces Ferry Road Suite 900 Atlanta, GA 30339 Tel: 770-431-8666 Fax: 770-435-2666 www.arcadis-us.com		ATLANTA, GEORGIA CITY OF ATLANTA DEPARTMENT OF WATERSHED MANAGEMENT EAST AREA WATER QUALITY CONTROL FACILITY IMPROVEMENTS W.01.02.0085	SHEET TITLE OUTSIDE PIPING, GRADING, DRAINAGE AND EROSION CONTROL PLAN 3	DATE: SEPTEMBER 2022	SCALE: 1" = 20'
	IF THIS BAR IS NOT INDICATED SCALE IS INCORRECT	1 AUG 2022 REVISED SDMH-5 LOCATION HG 0 JUL 2022 CONFORMED FOR CONSTRUCTION HG							PROJECT NO.: GABPA134 DESIGNED BY: W. HACKETT/DAW DRAWN BY: J. BROWN/ADC CHECKED BY: A. SHARP/DAW	SHEET 16 OF 150

User: SAIREYANEZ Spine: AUS-NCSMOD File: C:\USERS\SAIREYANEZ\ARCADIS\WATER STRUCTURAL SOUTH - GENERAL\MISC PROJECTS\CITY OF ATLANTA - EAST AREA - BP22BP3\BP22BP3\BP22\RFI-01 TRENCH DRAIN DESIGN\DWG\STRUCT\BP22TRENCH.DWG Scale: 1/4 Saved Date: 9/16/2022 Time: 10:28 Plot Date: Saire Yanez, Julio



ISSUED FOR CONSTRUCTION

ATLANTA, GEORGIA
CITY OF ATLANTA
DEPARTMENT OF
WATERSHED
MANAGEMENT

EAST AREA WATER QUALITY
CONTROL
FACILITY IMPROVEMENT

ARCADIS PROJ. NO. XXXXXXXXX.XXXX

NO.	DATE	ISSUED FOR	BY
0	SEP 2022	RFI-01	HDG

COPYRIGHT: ARCADIS U.S., INC. 2022

DATE: SEPTEMBER 2022
PROJECT NO.: XXX-XXX
FILE NAME: STRUCT_BP22TRENCH
DESIGNED BY: H. HOBI
DRAWN BY: J. SAIRE
CHECKED BY: H. HOBI

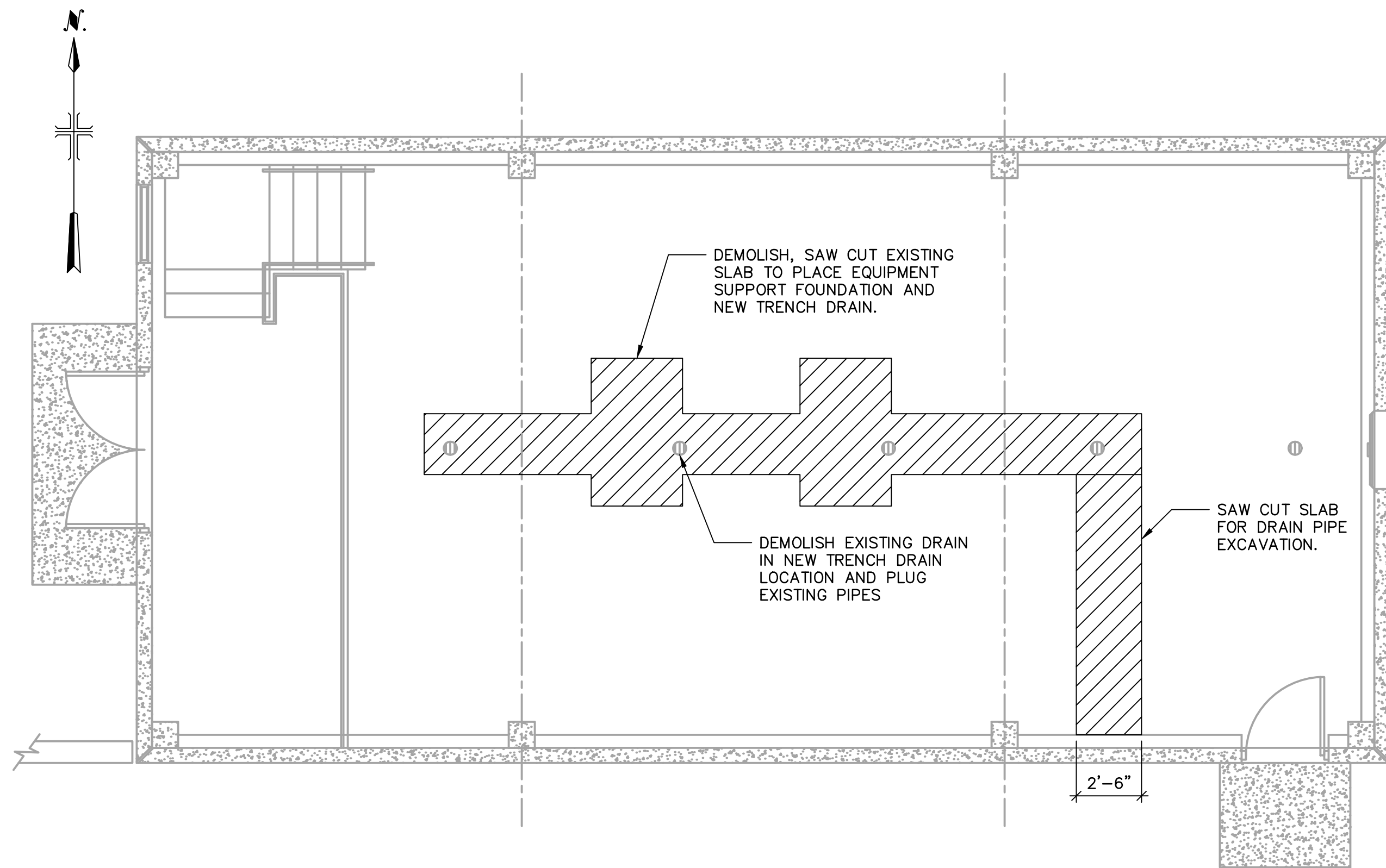
SHEET TITLE

STRUCTURAL
TRENCH DRAIN
SOLIDS
PROCESSING
PUMP STATION

SCALE: AS SHOWN

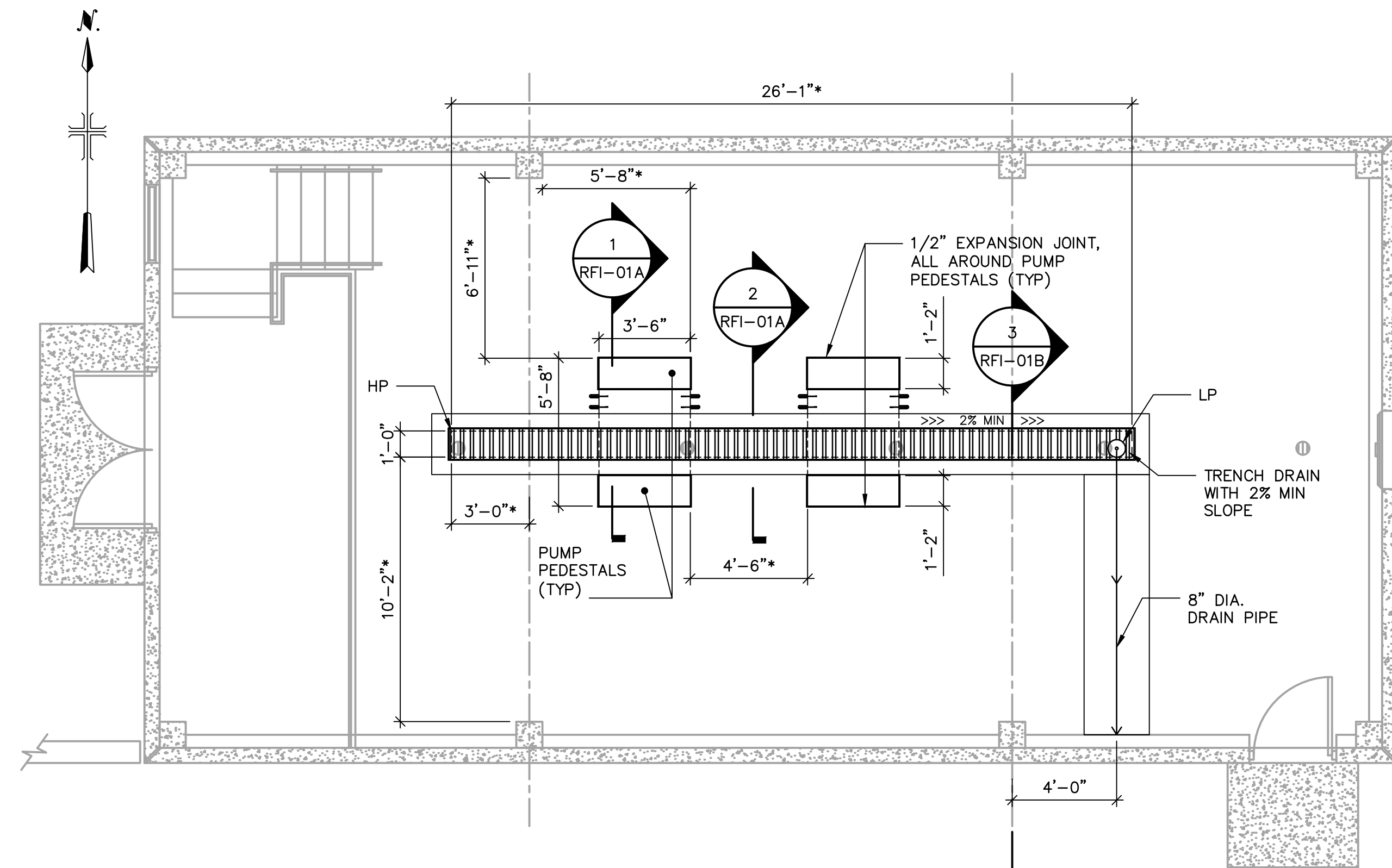
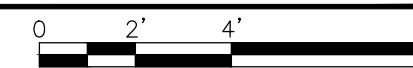
RFI-01A

SHEET 1 OF 2



DEMOLITION - PLAN VIEW

SCALE : 1/4" = 1'-0"



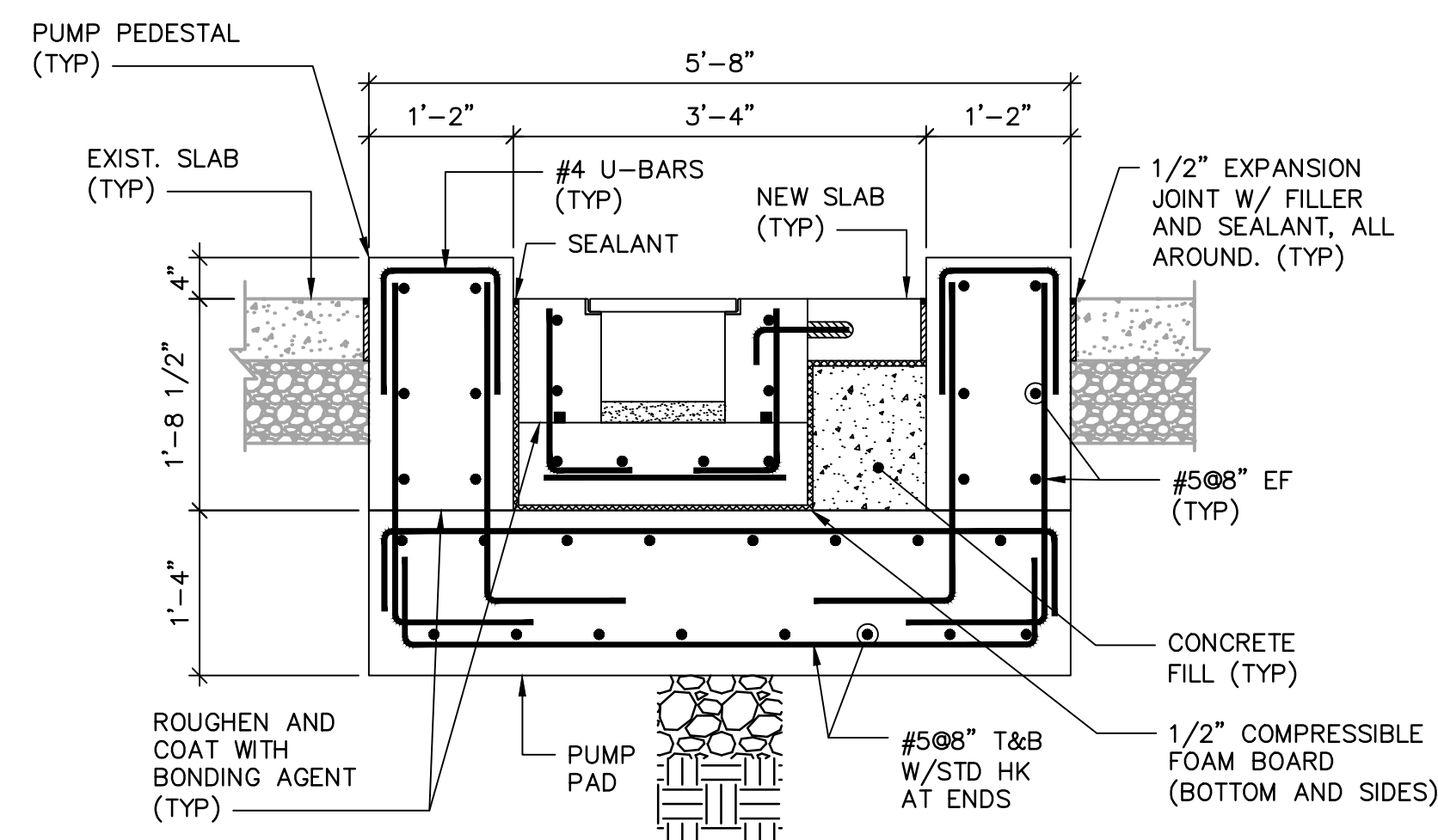
TRENCH DRAIN - PLAN VIEW

SCALE : 1/4" = 1'-0"



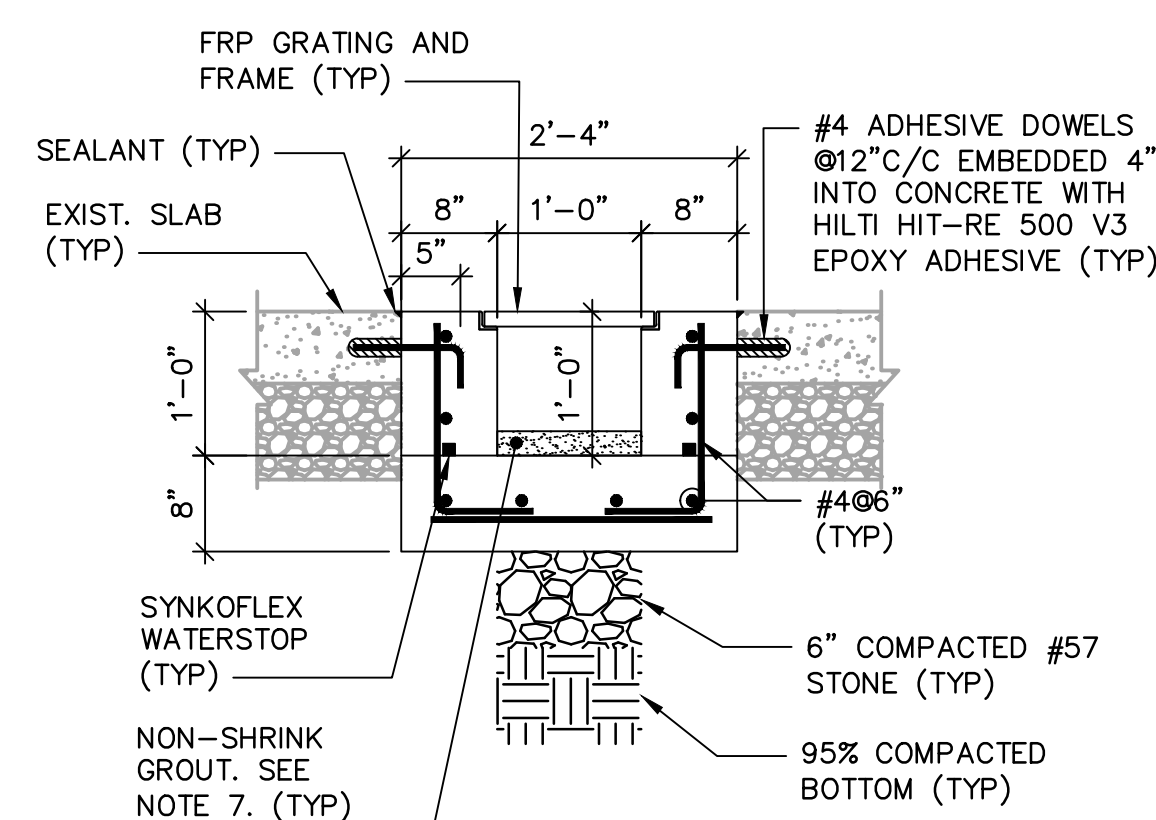
NOTES:

1. HP = HIGH POINT.
2. LP = LOW POINT.
3. CONCRETE ENCASE PIPE BELOW FOUNDATION SLAB.
4. 8" DIAMETER PIPE DRAIN TO EXIT THE BUILDING 12" BELOW THE WALL FOUNDATION.
5. WHEN EXCAVATING BELOW OR NEAR THE EXISTING WALL AND COLUMN FOOTINGS, PROVIDE TEMPORARY SUPPORTS TO ENSURE STABILITY OF STRUCTURE.
6. FIELD VERIFY ALL DIMENSIONS MARKED WITH (*).
7. APPLY NON-SHRINK GROUT TO THE BOTTOM OF THE TRENCH DRAIN TO CREATE 2% SLOPE.



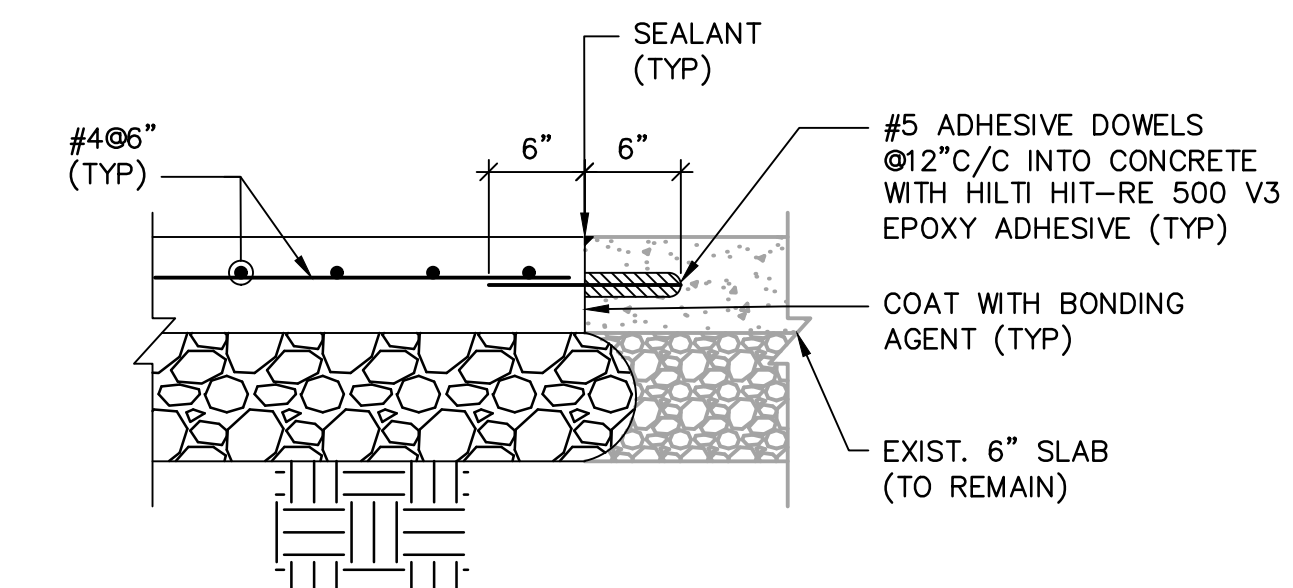
1 SECTION

SCALE : 3/4" = 1'-0"



2 SECTION

SCALE : 3/4" = 1'-0"



TYPICAL SLAB REPAIR DETAIL

SCALE : 1" = 1'-0"

User: ACRAIN Spec: AUS-NC5MOD File: \\ARCADIS-US.COM\OFFICE\DATA\ATLANTA-GA\GA02\DATA\AUTOCAD\PROJ\GABPA134 - CSO GROUP \BID PACKAGE 2\SHEETS\CIVIL\RFI-01B.DWG Scale: 1:1 SavedDate: 9/21/2022 Time: 11:31 Plot Date: Crain, Angelo: 9/21/2022 13:05 Layout: 4



ATLANTA, GEORGIA
CITY OF ATLANTA
DEPARTMENT OF
WATERSHED
MANAGEMENT

EAST AREA WATER QUALITY
CONTROL
FACILITY IMPROVEMENT

ARCADIS PROJ. NO. 30105595

NO.	DATE	ISSUED FOR	BY
0	SEP 2022	RFI-01B	DAW

COPYRIGHT: ARCADIS U.S., INC.
2022

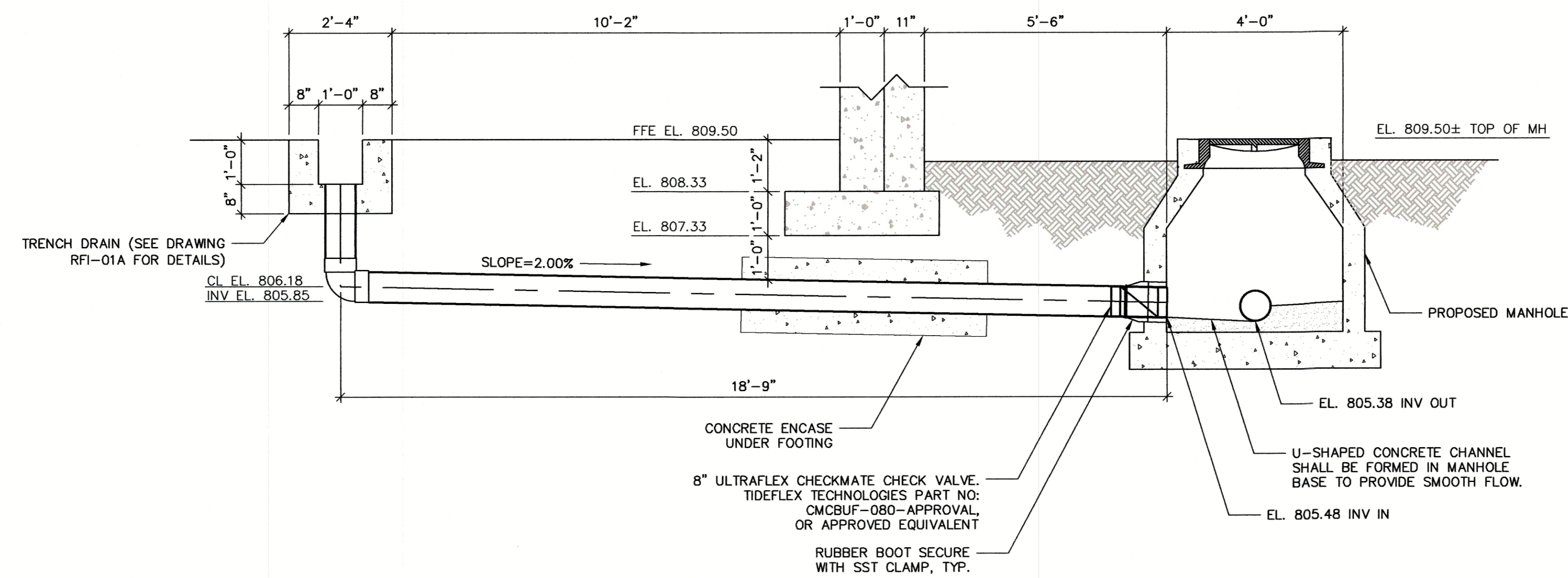
DATE: SEPTEMBER 2022
PROJECT NO.: GABPA134
FILE NAME: RFI-01B
DESIGNED BY: D. WILSON
DRAWN BY: A. CRAIN
CHECKED BY: D. WILSON

SHEET TITLE

CIVIL
TRENCH DRAIN
SOLIDS
PROCESSING
PUMP STATION

SCALE:

RFI-01B
SHEET 2 OF 2



3 SECTION
RFI-01A SCALE: 1" = 2'-0"