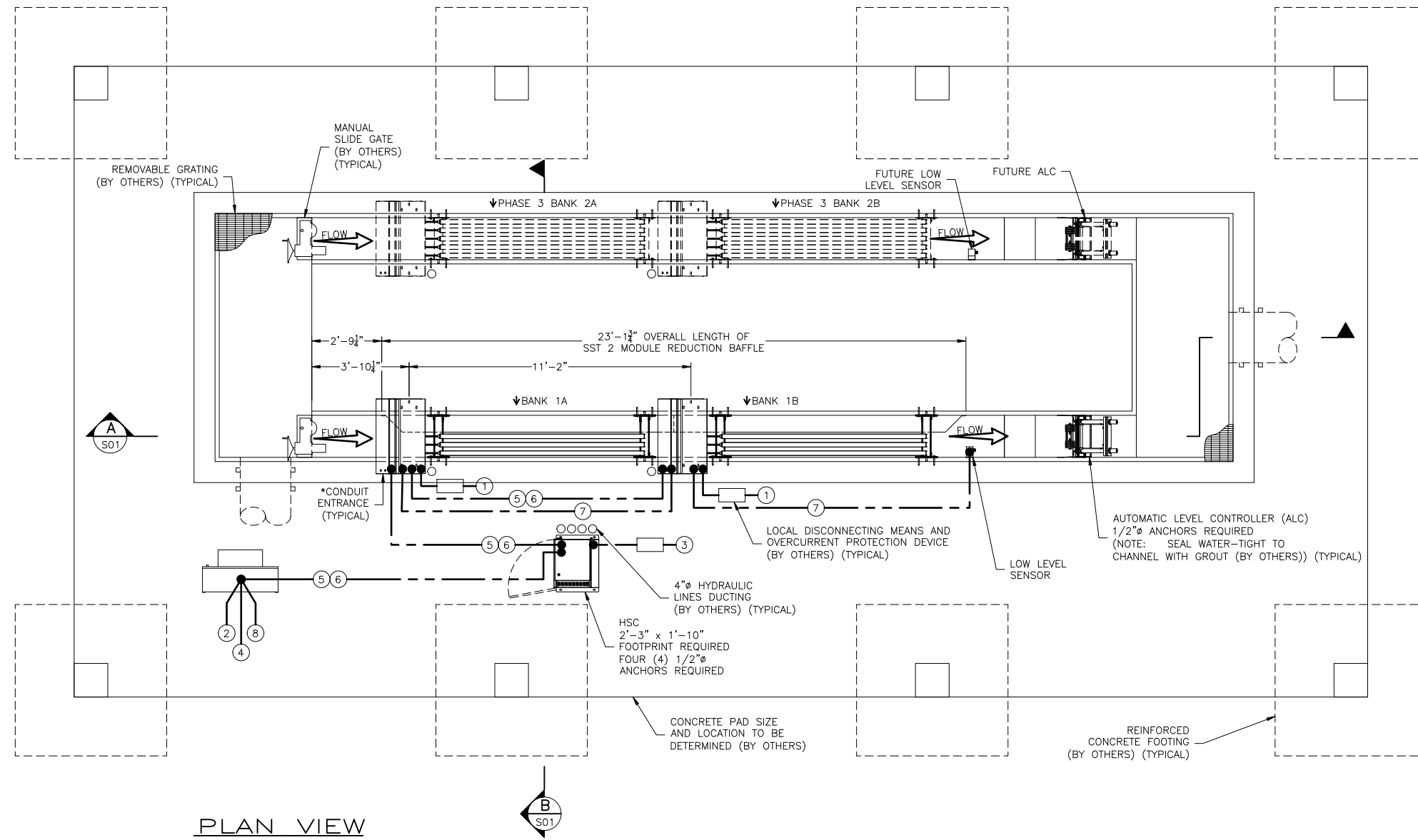


TROJAN UV3000 PLUS™ EQUIPMENT INTERCONNECTIONS

No.	DESCRIPTION	FROM	TO
1	POWER DISTRIBUTION CENTER (PDC) POWER SUPPLY 480Y/277V, 3 PHASE, 4 WIRE + GROUND 7.7 kVA/PDC POWER DRAW 12 AMPS MAXIMUM CURRENT/PHASE	DISTRIBUTION PANEL (DP) (BY OTHERS) (NOT SHOWN)	PDCs
2	SYSTEM CONTROL CENTER (SCC) POWER SUPPLY 120V, 1 PHASE, 2 WIRE + GROUND 1.8 kVA	DISTRIBUTION PANEL (DP) (BY OTHERS) (NOT SHOWN)	SCC
3	HYDRAULIC SYSTEMS CENTER (HSC) POWER SUPPLY 480V, 3 PHASE, 3 WIRE + GROUND 2.5 kVA, 3 AMPS	DISTRIBUTION PANEL (DP) (BY OTHERS) (NOT SHOWN)	HSC
4	FLOW METER	SCADA	SCC
5	GROUND LINK 14 AWG TYPE TWH STRANDED	SCC	PDCs THRU HSC (DAISY CHAINED)
6	MODBUS 1 SHIELDED TWISTED PAIR	SCC	PDCs THRU HSC (DAISY CHAINED)
7	DISCRETE LOW LEVEL SIGNAL 12 VDC, 2 CONDUCTORS	LOW LEVEL SENSOR	PDCs (DAISY CHAINED)
8	MODBUS ETHERNET COMMUNICATION	SCC	PLANT SCADA (BY OTHERS) (NOT SHOWN)



PLAN VIEW

SCALE: AS SHOWN
NOTE: ELECTRIC CRANE (BY OTHERS) NOT SHOWN FOR CLARITY.

CIVIL ENGINEERING CONSULTANTS, INC.
MARIETTA, GEORGIA 30068

No Exceptions Taken	No Exceptions Taken With Comment	Make Corrections Noted	Rejected
✓			

DATE **Oct 11, 2022**

BY *[Signature]*

**APPROVED FOR DESIGN ONLY.
CONTRACTOR SHALL VERIFY ALL
DIMENSIONS AND QUANTITIES.**

NOTES:

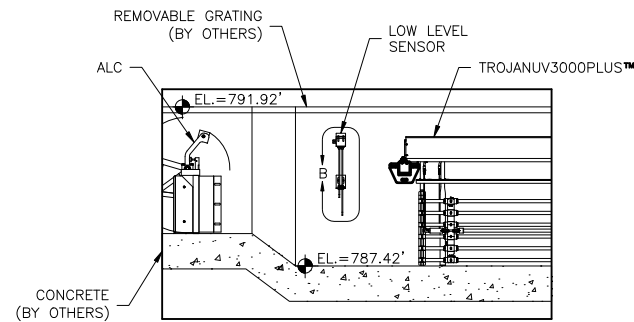
- : DO NOT SLOPE CHANNEL FLOOR.
- : CHANNEL WIDTH & DEPTH MUST BE KEPT WITHIN A TOLERANCE OF + OR - 1/4".
- : ANCHOR BOLTS ARE NOT SUPPLIED BY TROJAN TECHNOLOGIES.
- : SYSTEM CONDUIT, WIRING, CABLES, DISTRIBUTION PANELS & INTERCONNECTIONS BY OTHERS UNLESS OTHERWISE NOTED.
- : ELECTRICAL REQUIREMENTS SHOWN ARE TO SUPPLY TROJAN UV EQUIPMENT ONLY. ELECTRICAL INRUSH FACTOR TO BE ADDED AS PER LOCAL CODE.
- : REMOVABLE GRATING SECTIONS SHALL BE EASILY REMOVED BY ONE PERSON. MAXIMUM WEIGHT OF THE SECTIONS SHALL BE IN ACCORDANCE WITH REQUIREMENTS OF THE APPLICABLE JURISDICTION.
- : CONTRACTOR TO REVIEW ALL TROJAN TECHNOLOGIES INSTALLATION INSTRUCTIONS PRIOR TO EQUIPMENT INSTALLATION.
- : EFFLUENT LEVELS SHOWN REFLECT HYDRAULICS ASSOCIATED WITH TROJAN EQUIPMENT ONLY. EFFLUENT LEVELS MAY BE ALTERED DUE TO CHANNEL DEBRIS OR GEOMETRY.
- : GRATING IMMEDIATELY ABOVE UV MODULES TO BE OPEN TYPE (EG. PERFORATED) TO ALLOW ADEQUATE COOLING OF THE UV MODULES.
- : CONDUIT RUN BETWEEN HSC AND PDCs IS 20' MAXIMUM.
- : HSC HYDRAULIC ENTRANCE NOT BE MORE THAN 1'-0" BELOW PDC MOUNTING ELEVATION TO PREVENT HSC PUMP FLOODING.
- : TOLERANCE AT ALC IS CHANNEL WIDTH +1".
- : SITE TO PROVIDE APPROVED (ENGINEERED) ANCHOR POINTS FOR PERSONNEL TO USE AS PART OF THEIR FALL RESTRAINT SYSTEM AROUND OPEN CHANNELS. THE ANCHOR POINTS MUST BE POSITIONED SO THAT THE PREFERRED RETRACTABLE LIFELINE OF 8 FEET IS OF SUFFICIENT LENGTH TO ACCESS THE WORK AT THE CHANNEL.
- * POWER AND LOW VOLTAGE CONDUITS MUST ENTER LABELED LOCATION ON LEFT SIDE OF PDC.
- **MOST DOWNSTREAM WATERLEVEL WILL BE BASED ON TROJAN'S LAYOUT DRAWING (S02), AND NOT AS PER CONTRACT DRAWINGS (10-M-2).
- ***MOST UPSTREAM WATERLEVEL (PRIOR TO INLET GATES) NOT STATED IN THE CONTRACT DRAWINGS (10-M-2). IT WILL BE BASED ON TROJAN'S LAYOUT DRAWING (S02).
- ****CHANNEL WIDTH IS BASED ON THE UV SPEC (I.E. 20") AND NOT AS PER THE CONTRACT DRAWING (10-M-2, SECTION B).

DESIGN CRITERIA	PEAK FLOW	2.5 MGD (PHASE 1) 5 MGD (PHASE 2) (FUTURE) 10 MGD (PHASE 3) (FUTURE)
	U.V. TRANSMITTANCE AT 253.7 nm	65 %
	SUSPENDED SOLIDS	30 mg / L (30 DAY AVERAGE)
	DISINFECTION STANDARD	200 FC / 100mL (30 DAY GEO MEAN)

TROJAN UV
A TROJAN TECHNOLOGIES BUSINESS

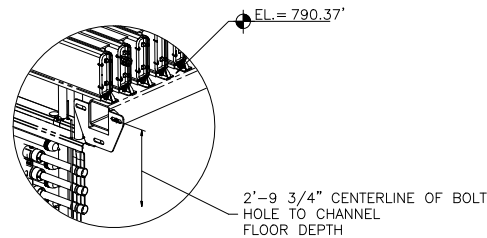
CONFIDENTIALITY NOTICE
Copyright © 2022 by Trojan Technologies. All rights reserved. No part of this document may be reproduced, stored in a retrieval system, or transmitted in any form, without the written permission of Trojan Technologies.

DESCRIPTION:	QUOTE NO.
LAYOUT, TROJANUV3000PLUS - CONCRETE CHANNEL JEFFERSON GA	231905
DRAWN BY : ADG	DATE : 22SE30
CHECKED BY : JRN	DATE : 22OC03
APPROVED BY : FD	DATE : 22OC03
SCALE (11x17) : 3/16" = 1'-0"	LOG NUMBER : N/A
PROJECT NO.	512399
DWG NO.	S01
REV.	B



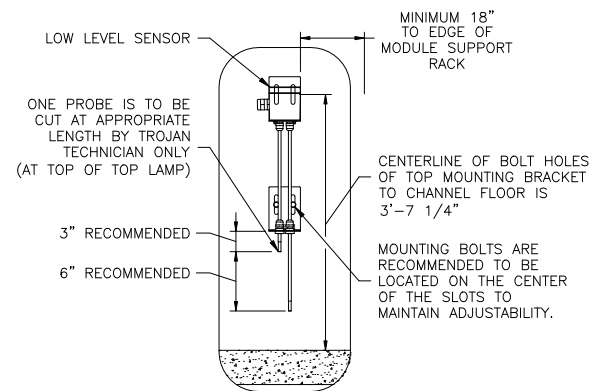
**FRONT VIEW OF
LOW LEVEL SENSOR**

SCALE: AS SHOWN



DETAIL A

SCALE: NOT TO SCALE

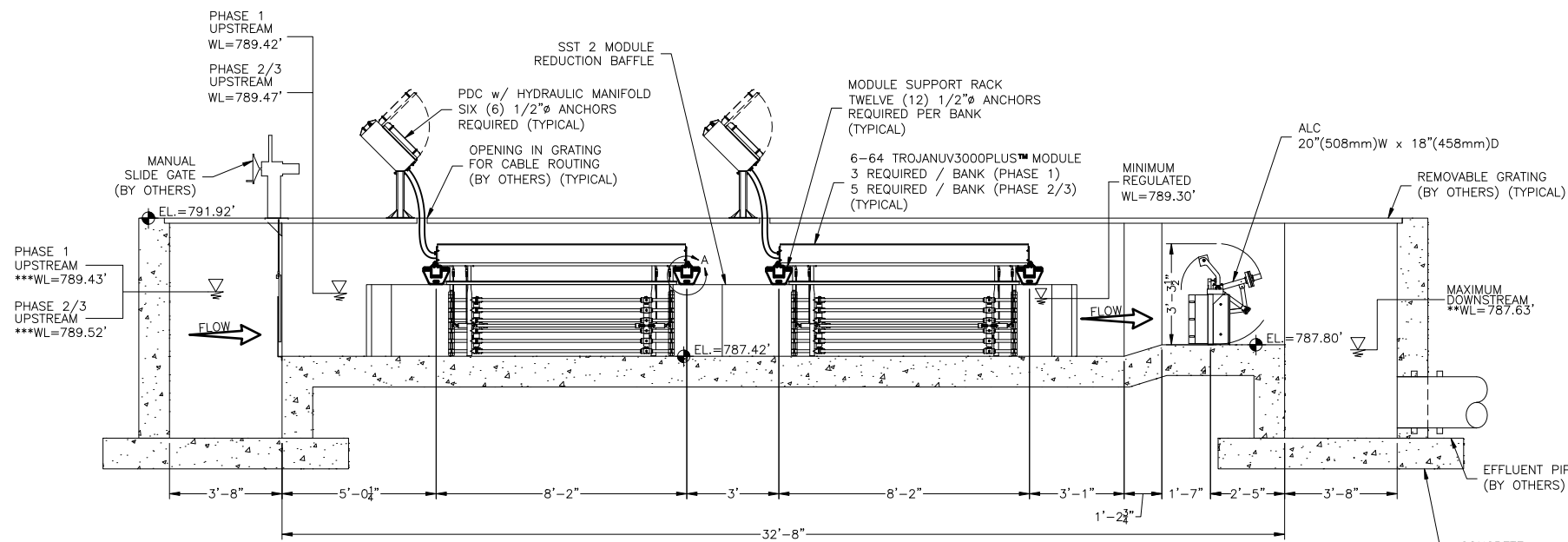


DETAIL B

SCALE: NOT TO SCALE

NOTES:

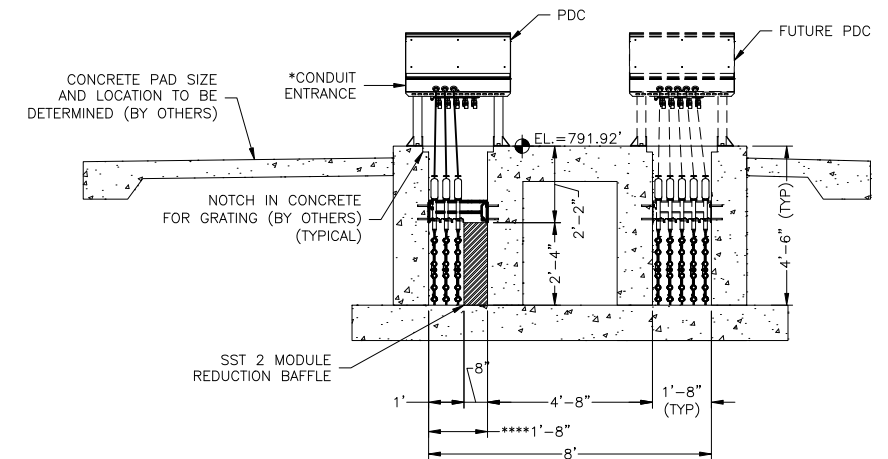
- : DO NOT SLOPE CHANNEL FLOOR.
- : CHANNEL WIDTH & DEPTH MUST BE KEPT WITHIN A TOLERANCE OF + OR - 1/4".
- : ANCHOR BOLTS ARE NOT SUPPLIED BY TROJAN TECHNOLOGIES.
- : SYSTEM CONDUIT, WIRING, CABLES, DISTRIBUTION PANELS & INTERCONNECTIONS BY OTHERS UNLESS OTHERWISE NOTED.
- : ELECTRICAL REQUIREMENTS SHOWN ARE TO SUPPLY TROJAN UV EQUIPMENT ONLY. ELECTRICAL INRUSH FACTOR TO BE ADDED AS PER LOCAL CODE.
- : REMOVABLE GRATING SECTIONS SHALL BE EASILY REMOVED BY ONE PERSON. MAXIMUM WEIGHT OF THE SECTIONS SHALL BE IN ACCORDANCE WITH REQUIREMENTS OF THE APPLICABLE JURISDICTION.
- : CONTRACTOR TO REVIEW ALL TROJAN TECHNOLOGIES INSTALLATION INSTRUCTIONS PRIOR TO EQUIPMENT INSTALLATION.
- : EFFLUENT LEVELS SHOWN REFLECT HYDRAULICS ASSOCIATED WITH TROJAN EQUIPMENT ONLY. EFFLUENT LEVELS MAY BE ALTERED DUE TO CHANNEL DEBRIS OR GEOMETRY.
- : GRATING IMMEDIATELY ABOVE UV MODULES TO BE OPEN TYPE (EG. PERFORATED) TO ALLOW ADEQUATE COOLING OF THE UV MODULES.
- : CONDUIT RUN BETWEEN HSC AND PDCs IS 20' MAXIMUM.
- : HSC HYDRAULIC ENTRANCE NOT BE MORE THAN 1'-0" BELOW PDC MOUNTING ELEVATION TO PREVENT HSC PUMP FLOODING.
- : TOLERANCE AT ALC IS CHANNEL WIDTH +1".
- : SITE TO PROVIDE APPROVED (ENGINEERED) ANCHOR POINTS FOR PERSONNEL TO USE AS PART OF THEIR FALL RESTRAINT SYSTEM AROUND OPEN CHANNELS. THE ANCHOR POINTS MUST BE POSITIONED SO THAT THE PREFERRED RETRACTABLE LIFELINE OF 8 FEET IS OF SUFFICIENT LENGTH TO ACCESS THE WORK AT THE CHANNEL.
- * POWER AND LOW VOLTAGE CONDUITS MUST ENTER LABELED LOCATION ON LEFT SIDE OF PDC.
- **MOST DOWNSTREAM WATERLEVEL WILL BE BASED ON TROJAN'S LAYOUT DRAWING (S02), AND NOT AS PER CONTRACT DRAWINGS (10-M-2).
- ***MOST UPSTREAM WATERLEVEL (PRIOR TO INLET GATES) NOT STATED IN THE CONTRACT DRAWINGS (10-M-2). IT WILL BE BASED ON TROJAN'S LAYOUT DRAWING (S02).
- ****CHANNEL WIDTH IS BASED ON THE UV SPEC (I.E. 20") AND NOT AS PER THE CONTRACT DRAWING (10-M-2, SECTION B).



A SECTION

S01 SCALE: AS SHOWN

NOTE: CANOPY, AND ELECTRIC CRANE (BY OTHERS) NOT SHOWN FOR CLARITY.



B SECTION

S01 SCALE: AS SHOWN

NOTE: CANOPY, ELECTRIC CRANE (BY OTHERS), SCC, REMOVABLE GRATING (BY OTHERS), AND SLIDE GATES (BY OTHERS) NOT SHOWN FOR CLARITY.

<p>TROJANUV A TROJAN TECHNOLOGIES BUSINESS</p> <p>CONFIDENTIALITY NOTICE Copyright © 2022 by Trojan Technologies. All rights reserved. No part of this document may be reproduced, stored in a retrieval system, or transmitted in any form, without the written permission of Trojan Technologies.</p>	DESCRIPTION: LAYOUT, TROJANUV3000PLUS - CONCRETE CHANNEL JEFFERSON GA		QUOTE NO. 231905
	DRAWN BY : ADG	DATE : 22SE30	PROJECT NO. 512399
	CHECKED BY : JRN	DATE : 22OC03	DWG NO. REV. S02 B
	APPROVED BY : FD	DATE : 22OC03	LOG NUMBER : N/A
SCALE (11x17) : 3/16" = 1'-0"			